



# BEAVER TECHNOLOGY SERVICES

## HIGH FORCE CABLE PULLING ROPES



High Force Cable Pulling Ropes are of the highest quality and performance available today. With a choice of Double Braid or 12-Strand construction with Nylon, Polyester or a combination of fibres, we can provide you with the right rope for the right job.



EMPOWERED BY INNOVATION

# HIGH FORCE CABLE PULLING ROPES

## Double Braid Composite

### 4N Series

- Strong Polyester Cover over Shock Absorbent Nylon Core
- Double Braid Construction
- Chemical Resistant, Maximum Energy Absorption
- UV and Abrasion Resistant
- Several Diameters and Break Strengths Available
- Multiple Colour Options for Rope Differentiation

Part #	Diameter	Av. Break Strength	Wt per 100ft
4N-080	6mm	12kN	0.86kg
4N-120	10mm	27kN	2.13kg
4N-160	13mm	47kN	3.44kg
4N-180	14mm	61kN	4.30kg
4N-200	16mm	68kN	5.44kg
4N-240	19mm	114kN	7.52kg
4N-280	22mm	166kN	10.75kg
4N-320	25mm	211kN	14.06kg
4N-360	29mm	253kN	16.32kg



## Double Braid Polyester

### 1A Series

- Strong Polyester Cover over a Low Stretch Polyester Core
- Double Braid Construction
- Chemical Resistant, Low Stretch
- UV and Abrasion Resistant
- Several Diameters and Break Strengths Available
- Multiple Colour Options for Rope Differentiation

Part #	Diameter	Av. Break Strength	Wt per 100ft
1A-060	5mm	5kN	0.58kg
1A-080	6mm	9kN	1.04kg
1A-100	8mm	14kN	1.45kg
1A-120	10mm	22kN	1.99kg
1A-140	11mm	31kN	2.81kg
1A-160	13mm	37kN	3.62kg
1A-180	14mm	51kN	4.58kg
1A-200	16mm	55kN	5.58kg
1A-240	19mm	87kN	8.21kg
1A-280	22mm	113kN	10.66kg
1A-320	25mm	149kN	14.50kg
1A-360	29mm	184kN	19.05kg
1A-400	32mm	233kN	22.67kg



## KRYPTON-D with Dyneema®

### 5D Series

- Strong Polyester Cover over a Braided Dyneema® Core
- 10 x Stronger than Steel yet Floats
- Double Braid Construction
- Eliminate Backlash
- Low Electrical Conductivity
- Chemical Resistant, Maximum Energy Absorption
- UV and Abrasion Resistant
- Several Diameters and Break Strengths Available

Part #	Diameter	Av. Break Strength	Wt per 100ft
5D-080	6mm	21kN	0.99kg
5D-100	8mm	30kN	1.63kg
5D-120	10mm	51kN	2.31kg
5D-140	11mm	65kN	2.94kg
5D-160	13mm	85kN	3.58kg
5D-180	14mm	108kN	4.80kg
5D-200	16mm	130kN	5.76kg
5D-240	19mm	181kN	7.85kg



## 12-Strand Polyester

### 1A Series

- High Strength
- Torque Free Low Stretch
- UV and Abrasion Resistant
- Several Diameters and Break Strengths Available
- Multiple Colour Options for Rope Differentiation

Part #	Diameter	Av. Break Strength	Wt per 100ft
7PE-080	6mm	15kN	0.91kg
7PE-100	8mm	21kN	1.36kg
7PE-120	10mm	27kN	2.04kg
7PE-160	13mm	53kN	3.27kg
7PE-200	16mm	74kN	6.03kg
7PE-240	19mm	100kN	7.48kg
7PE-280	22mm	133kN	10.61kg
7PE-320	25mm	166kN	14.75kg





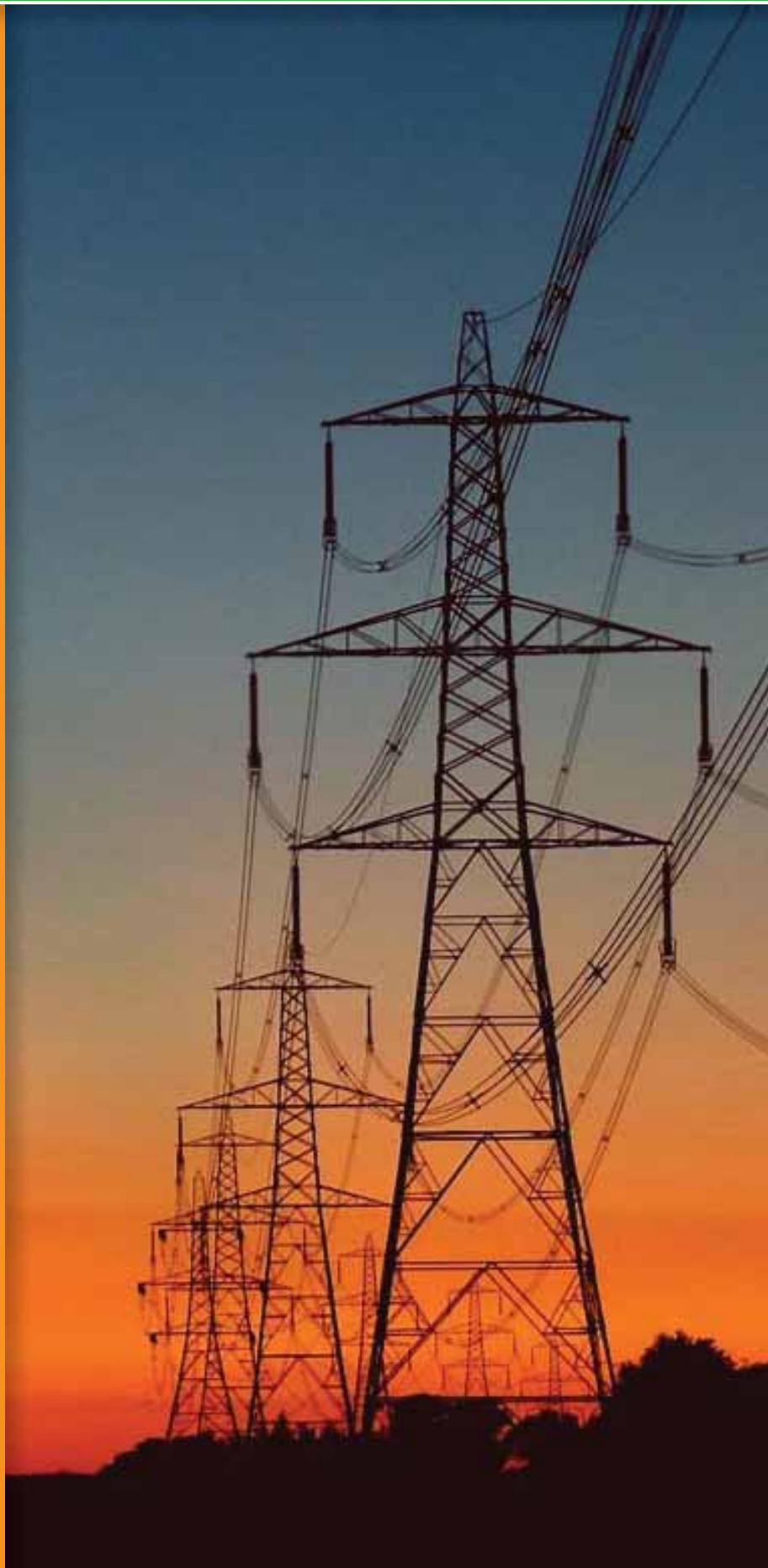


# BEAVER TECHNOLOGY SERVICES

## HIGH TECH UTILITY STRINGING LINES



High Strength Utility Stringing Rope are of the highest quality and performance available today. With a choice of Double Braid or 12-Strand construction with Dyneema®, Technora®, Kevlar®, Kevlar AP®, Polyester or a combination of fibres, we can provide you with the right rope for the right job.



EMPOWERED BY INNOVATION

# HIGH TECH UTILITY STRINGING LINES

## 12-Strand Dyneema®

### 7D Series

- 100% Dyneema® SK75 Fibre
- 12-Strand Construction
- Specific Gravity of 0.98
- Low Flex Fatigue, Easily Spliced
- Low Electrical Conductivity
- High Strength, No Stretch
- Break Strength Unaffected by Moisture
- Several Diameters and Tensile Strengths Available

Part #	Diameter	Av. Break Strength	Wt per 33m
7D-040	3mm	10kN	0.22 kg
7D-060	5mm	24kN	0.45kg
7D-080	6mm	44kN	0.72kg
7D-100	8mm	51kN	1.17kg
7D-120	10mm	80kN	1.63kg
7D-140	11mm	107kN	2.08kg
7D-160	13mm	134kN	2.89kg
7D-180	14mm	169kN	3.39kg
7D-200	16mm	227kN	4.09kg
7D-240	19mm	276kN	5.84kg
7D-280	22mm	400kN	8.43kg
7D-320	25mm	489kN	9.97kg

## 12-Strand Technora®

### 7T Series

- 100% Technora® Fibre
- 12-Strand Construction
- 8 Times Stronger Than Steel
- Low Flex Fatigue, Zero Creep
- Low Electrical Conductivity
- Low Thermal Shrinkage
- Excellent Abrasion Resistance

Part #	Diameter	Av. Break Strength	Wt per 33m
7T-040	3mm	12kN	0.27
7T-060	5mm	26kN	0.58
7T-080	6mm	36kN	0.99
7T-100	8mm	55kN	1.49
7T-120	10mm	78kN	1.99
7T-140	11mm	110kN	2.99
7T-160	13mm	134kN	3.71
7T-200	16mm	178kN	5.89
7T-240	19mm	227kN	8.16
7T-280	22mm	271kN	11.33
7T-320	25mm	431kN	13.97

## KRYPTON-K with Kevlar AP®

### 5K Series

- Strong Polyester Cover over a Braided Kevlar AP® Core
- High Heat Resistant Core
- Double Braid Construction
- Eliminate Backlash
- Low Electrical Conductivity
- Chemical Resistant, Maximum Energy Absorption
- UV and Abrasion Resistant
- Several Diameters and Break Strengths Available

Part #	Diameter	Av. Break Strength	Wt per 33m
5K-080	6mm	18kN	1.08kg
5K-100	8mm	25kN	1.63kg
5K-120	10mm	33kN	2.17kg
5K-140	11mm	49kN	2.90kg
5K-160	13mm	67kN	3.35kg
5K-200	16mm	98kN	5.35kg
5K-240	19mm	147kN	7.75kg

## KRYPTON-T with Technora®

### 5T Series

- Strong Polyester Cover over a Braided Technora® Core
- High Heat Resistant Core
- Double Braid Construction
- Eliminate Backlash
- Low Electrical Conductivity
- Chemical Resistant, Maximum Energy Absorption
- UV and Abrasion Resistant
- Several Diameters and Break Strengths Available

Part #	Diameter	Av. Break Strength	Wt per 33m
5T-080	6mm	20kN	1.08kg
5T-100	8mm	34kN	1.67kg
5T-120	10mm	44kN	2.08kg
5T-140	11mm	65kN	2.99kg
5T-160	13mm	95kN	4.17kg
5T-200	16mm	156kN	5.89kg
5T-240	19mm	178kN	6.99kg

## KRYPTON-D with Dyneema®

### 5D Series

- Strong Polyester Cover over a Braided Dyneema® Core
- 10 x Stronger than Steel yet Floats
- Double Braid Construction
- Eliminate Backlash
- Low Electrical Conductivity
- Chemical Resistant, Maximum Energy Absorption
- UV and Abrasion Resistant
- Several Diameters and Break Strengths Available

Part #	Diameter	Av. Break Strength	Wt per 33m
5D-080	6mm	21kN	0.99kg
5D-100	8mm	34kN	1.63kg
5D-120	10mm	51kN	2.31kg
5D-140	11mm	65kN	2.95kg
5D-160	13mm	85kN	3.58kg
5D-180	14mm	109kN	4.80kg
5D-200	16mm	131kN	5.76kg
5D-240	19mm	181kN	7.84kg



# BEAVER TECHNOLOGY SERVICES

## WATER RESCUE AND TOW ROPES



The range of Water Rescue Ropes are of the highest quality and performance available today.

The patented Glow Water Rescue Ropes are specifically designed for use in low to no-light water rescue operations. By infusing long-lasting phosphorescent pigment into the Polypropylene at the point of extrusion, the glow fiber's properties will not be adversely affected by UV, abrasion, sea water or most harsh chemicals. Underwater cave rescues are dramatically enhanced by the long lasting glow properties which can last up to 6 hours.

Water Tow Ropes are made of 12-Strand DYNEEMA® and are extremely strong, with a no-stretch braid that eliminates dangerous snap back, yet are so light that they float.



EMPOWERED BY INNOVATION



# WATER RESCUE AND TOW ROPES

## Dyneema® Water Throw Line

#3Q-08Y

- Polypropylene Cover over a 100% Dyneema® Core
- 6mm Static Kernmantle Construction
- High Visibility, Floats
- High Strength, Low Stretch
- Break Strength Unaffected by Moisture
- Tensile Strength: 2,400 lbs (10.67kN)
- Weight: 1.7 lbs per 100 feet

## Glow Dyneema® Water Throw Line

#G3Q-08R

- Glow Polypropylene Cover over a Blended Dyneema® and Polypropylene Core.
- 6mm Static Kernmantle Construction
- Retroglow Reflective Tracers for Added Visibility
- High Visibility Day or Night
- High Strength, Low Stretch, Floats
- Break Strength Unaffected by Moisture
- Tensile Strength: 2,400 lbs (8.9kN)
- Weight: 1.75 lbs per 100 feet

## Dyneema® Water Throw Line

#3Q-12Y

- Polypropylene Cover over a 100% Dyneema® Core
- 10mm Static Kernmantle Construction
- Retroglow Reflective Tracers for Added Visibility
- High Visibility Day or Night
- High Strength, Low Stretch
- Tensile Strength: 5,500lbs (24.46kN)
- Weight: 3.3 lbs per 100 feet

## Glow Dyneema® Water Throw Line

# G3Q-12R

- Glow Polypropylene Cover over a 100% Dyneema® Core
- 10mm Static Kernmantle Construction
- Retroglow Reflective Tracers for Added Visibility
- High Visibility Day or Night
- High Strength, Low Stretch, Floats
- Break Strength Unaffected by Moisture
- Tensile Strength: 5,500lbs (24.46kN)
- Weight: 3.75 lbs per 100 feet

## Water Throw Line

#3P-12Y

- 100% Polypropylene
- 10mm Static Kernmantle Construction
- Retroglow Reflective Tracers for Added Visibility
- High Visibility Day or Night
- Colourful Markers Help Track Rope's Position
- Tensile Strength: 2,600lbs (11.5kN)
- Weight: 3.2 lbs per 100 feet

## Glow Water Throw Line

#G1Y-12R

- Glow Polypropylene Cover over a Polypropylene Core
- 10mm Static Kernmantle Construction
- Retroglow Reflective Tracers for Added Visibility
- High Visibility Day or Night
- High Strength, Low Stretch, Floats
- Break Strength Unaffected by Moisture
- Tensile Strength: 2,133 lbs (9.49kN)
- Weight: 3.5 lbs per 100 feet

## Water Throw Line

#3P-14Y

- 100% Polypropylene
- 11mm Static Kernmantle Construction
- Retroglow Reflective Tracers for Added Visibility
- High Visibility Day or Night
- Colourful Markers Help Track Rope's Position
- Tensile Strength: 3,380lbs (15.03kN)
- Weight: 4.7 lbs per 100 feet

## Glow Water Throw Line

#G1Y-16R

- Glow Polypropylene Cover over a Polypropylene Core
- 13mm Static Kernmantle Construction
- Retroglow Reflective Tracers for Added Visibility
- High Visibility Day or Night
- High Strength, Low Stretch
- Tensile Strength: 3,265 lbs (14.5kN)
- Weight: 6 lbs per 100 feet

## Dyneema® Water Tow and Winch Line

- 100% Dyneema® SK75 fibre
- 12-Strand Construction
- Specific Gravity of 0.98
- Low Flex Fatigue, Easily Spliced
- High Strength, No Stretch
- Break Strength Unaffected by Moisture
- Several Diameters and Tensile Strengths Available

## Glow Trail (Tag) Line Assembly #AGTS-16R-105



- Glow Polypropylene Cover over a Polypropylene Core
- 13mm Static Kernmantle Construction
- Two Sewn Eye Ends w/ Thimbles, One Snap Shackle
- Retroglow Reflective Tracers
- High Visibility Day or Night, High Strength, Low Stretch
- Quick Release Snap has an 8,477lb Break Strength
- Length: 105 ft      Rope MBS 3,265 lbs (14.5kN)



**BEAVER TECHNOLOGY SERVICES**

Phone: +61 2 8811 3500  
Web: [www.beavergrp.com.au](http://www.beavergrp.com.au)



Distributor:



# BEAVER TECHNOLOGY SERVICES

## LIFE SAFETY GLOW ROPES



The patented line of Glow Life Safety Ropes, are specifically designed for use in low to no-light rescue operations. With just a five minute charge by sunlight, black light, NightSun Spotlights or any incandescent light source, these glow fibres will glow for up to 6 hours with intensity slowly diminishing over time.

By infusing the long-lasting phosphorescent pigment into the liquid Nylon, Polyester or Polypropylene at the point of extrusion, the glow fibre's properties are protected and will not be adversely affected by UV, abrasion, sea water or most harsh chemicals. Even if the rope is cut, the glow will continue to shine demonstrated by the photo below.

Glow Helicopter Short Haul Rope with KEVLAR AP® is UL Certified to NFPA 1983-2006 edition standards and provides point of reference indication for the Pilot and allows both victim and rescuer to see and track the rope as it is lowered. Glow Ropes do not interfere with Night Vision apparatus as demonstrated below.

Glow Helicopter Short Haul Rope with DYNEE-MA® meets the minimum tensile strength requirements of an NFPA General Use or "Two Man" Rope yet has a specific gravity of 0.98 which means that this rope floats.

Cave rescues and Confined Space rescues are enhanced by not only providing depth of field, but providing a light source for victims to focus on.



# LIFE SAFETY GLOW ROPES

## Glow DYNEEMA Water Throw Line #G3Q-08R



- Glow Polypropylene Cover over a Blended Dyneema® and Polypropylene Core.
- 6mm (6mm) Static Kernmantle Construction
- Retroglow Reflective Tracers for Added Visibility
- High Visibility Day or Night
- High Strength, Low Stretch
- Minimum Break Strength: 2,293lbs (10.2 kN)
- Weight: 2.05 lbs per 100 feet

## Glow DYNEEMA Water Throw Line #G3Q-12R



- Glow Polypropylene Cover over a Blended Dyneema® and Polypropylene Core.
- 10mm (10mm) Static Kernmantle Construction
- Retroglow Reflective Tracers for Added Visibility
- High Visibility Day or Night
- High Strength, Low Stretch
- Minimum Break Strength: 4,650lbs (20.7 kN)
- Weight: 2.84 lbs per 100 feet

## Glow Water Throw Line #G1Y-12R



- Glow Polypropylene Cover over a Polypropylene Core
- 10mm (10mm) Static Kernmantle Construction
- Retroglow Reflective Tracers for Added Visibility
- High Visibility Day or Night
- High Strength, Low Stretch
- Minimum Break Strength: 2,133lbs (9.49 kN)
- Weight: 2.94 lbs per 100 feet

## Glow Water Throw Line #G1Y-16R



- Glow Polypropylene Cover over a Polypropylene Core
- 13mm (13mm) Static Kernmantle Construction
- Retroglow Reflective Tracers for Added Visibility
- High Visibility Day or Night
- High Strength, Low Stretch
- Minimum Break Strength: 3,265 lbs (14.5 kN)
- Weight: 5.73 lbs per 100 feet

## Glow Double Braid #GHN-12R



- Glow Nylon over Strong Nylon Core
- 10mm (10mm) Double Braid Construction
- Retroglow Reflective Tracers for Added Visibility
- High Visibility Day or Night
- High Strength, Low Stretch
- Average Tensile Strength: 4,435 lbs (19.7 kN)
- Weight: 4.41 lbs per 100 feet

## Glow Double Braid #GHN-16R



- Glow Nylon over Strong Nylon Core
- 13mm (13mm) Double Braid Construction
- Retroglow Reflective Tracers for Added Visibility
- High Visibility Day or Night
- High Strength, Low Stretch
- Average Tensile Strength: 8,500 lbs (37.8 kN)
- Weight: 6.98 lbs per 100 feet

## Glow Technora® Winch Line #G5T-10R



- Glow Nylon over a Technora® Core
- 8mm (8mm) Double Braid Construction
- Retroglow Reflective Tracers for Added Visibility
- High Strength, Low Stretch
- High Visibility Day or Night
- Glow Nylon provides Rope-Rope Friction on Capstan
- Average Tensile Strength: 7,600 lbs (33.8 kN)
- Weight: 3.7 lbs per 100 feet

## Glow Dyneema® Winch Line #G5D-10R



- Glow Nylon over a Dyneema® Core
- 8mm (8mm) Double Braid Construction
- Retroglow Reflective Tracers for Added Visibility
- High Strength, Low Stretch
- High Visibility Day or Night
- Glow Nylon provides Rope-Rope Friction on Capstan
- Average Tensile Strength: 6,800 lbs (30.25 kN)
- Weight: 3.6 lbs per 100 feet

## Glow Helicopter Short Haul Rope #GKK-16R



- Glow Nylon over KEVLAR AP® Core
- 13 mm Diameter Kernmantle Construction
- High Visibility Day or Night
- High Strength, No Stretch
- Minimum Break Strength: 12,162 lbs (54.1kN)
- Weight: 825 lbs per 100 feet



## Glow Helicopter Short Haul Rope #GHD-16R



- Glow Nylon over DYNEEMA® Core
- 13mm Diameter Kernmantle Construction
- High Visibility Day or Night
- High Strength, No Stretch
- Average Tensile Strength: 13,378 lbs (59.5kN)
- Weight: 7.0 lbs per 100 feet

## Glow Nylon Caving Line #GHN-030



- 100% Glow Nylon
- 3/32" (2.38mm) Diameter
- Double Braid Construction
- High Visibility Day or Night
- High Strength, Moderate Stretch
- Average Tensile Strength: 254 lbs (1.13 kN)
- Weight: 0.35 lbs per 100 feet

## Glow Nylon Caving Line #GHN-040



- 100% Glow Nylon
- 1/8" (3.0 mm) Diameter
- Double Braid Construction
- High Visibility Day or Night
- High Strength, Moderate Stretch
- Average Tensile Strength: 405 lbs (1.8 kN)
- Weight: 0.82 lbs per 100 feet

## Glow Trail (Tag) Line Assembly #AGTS-16R



- Glow Polypropylene Cover over a Polypropylene Core
- 13mm (13mm) Static Kernmantle Construction
- Two Sewn Eye Ends w/ Thimbles, One Snap Shackle
- Retroglow Reflective Tracers
- High Visibility Day or Night, High Strength, Low Stretch
- Quick Release Snap has an 8,477 lb Break Strength
- Length: 105 ft      Rope MBS 3,265 lbs (14.5 kN)

## Glow Nylon Safety Webbing #GWB-10R



- Glow Nylon on One Side
- 19mm (19mm) Solid Webbing
- High Strength, Low Stretch
- High Visibility Day or Night
- Average Tensile Strength: 2,442 lbs (30.25kN)
- Weight: 2.25 lbs per 100 feet





# BEAVER TECHNOLOGY SERVICES

## RAPPELLING ROPES



Static Kernmantle Construction ropes are the first choice of Tower and Maintenance Professionals. These rappelling ropes feature a tough, chemical and abrasion resistant Polyester cover over a non-rotational parallel Nylon core for maximum energy absorption while keeping a firm hand and remaining flexible enough to be tied and passed over pulleys and sheaves. Steam setting helps to eliminate cover-over-core slippage.



EMPOWERED BY INNOVATION

# RAPPELLING ROPES



Static Kernmantle Construction ropes

2WP Series

Part #	Diameter	AV. Break Strength	Wt per 100ft
2WP-120	10mm	28kN	2.17kg
2WP-140	11mm	35kN	2.90kg
2WP-160	13mm	47kN	4.08kg
2WP-200	16mm	58kN	5.44kg



Standard colour Combinations:







# BEAVER TECHNOLOGY SERVICES

## SEARCH AND ESCAPE



High strength and high heat resistant ropes, certified to NFPA 1983:2006 Edition Standards, for Search and Escape operations provide dependability and durability in the most demanding rescue environments. These lines, made with Technora® and the new Kevlar AP® fibres are the choice of Fire and Rescue professionals as well as Bail-out Pack and Descender manufacturers.

Also available in hollow braid Kevlar AP® to suit fire fighters for high heat resistant search lines and search packs.



EMPOWERED BY INNOVATION



# SEARCH AND ESCAPE

## Technora® Escape Rope

#2TT-7.5T

- 100% Technora®
- 7.5mm Static Kernmantle Construction
- High Heat Resistant up to 932°F (500°C)
- High Strength, Low Stretch
- Smooth, Firm Hand
- Minimum Break Strength: 23.5 kN (5,285 lbs)
- Weight: 2.85 lbs per 100 feet



## Technora® Poly Escape Rope

#2TP-7.5T

- Technora® Cover over Strong Polyester Core
- 7.5mm Static Kernmantle Construction
- Cover is High Heat Resistant up to 932°F (500°C)
- High Strength, Low Stretch
- Smooth, Firm Hand
- Minimum Break Strength: 16.2 kN (3,641 lbs)
- Weight: 2.95 lbs per 100 feet



## Kevlar AP® Escape Rope

#2KK-7.5K

- 100% Kevlar AP®
- 7.5mm Static Kernmantle Construction
- High Heat Resistant up to 932°F (500°C)
- High Strength, Low Stretch
- Smooth, Firm Hand
- Minimum Break Strength: 27 kN (6,069 lbs)
- Weight: 2.85 lbs per 100 feet



## Kevlar AP® Poly Escape Rope

#2KP-7.5K

- Kevlar AP® Cover over Strong Polyester Core
- 7.5mm Static Kernmantle Construction
- Cover is High Heat Resistant up to 932°F (500°C)
- High Strength, Low Stretch
- Smooth, Firm Hand
- Minimum Break Strength: 19.8 kN (4,451 lbs)
- Weight: 2.95 lbs per 100 feet



## Kevlar AP® Hollow Braid Search Line #KHB-160

- 100% Kevlar AP® Hollow Braid
- 12.5mm Diameter
- High Heat Resistant up to 932°F (500°C)
- High Strength, Low Stretch
- Smooth Hand, Folds Well Into Packs
- Average Break Strength: 15.6 kN (3,500 lbs)
- Weight: 2.0 lbs per 100 ft.

## Personal Escape Rope (PER)

#2WP-7.5

- Strong Polyester over Shock Absorbent Nylon
- 7.5mm Static Kernmantle Construction
- Heat and Chemical Resistant
- High Strength, Shock Absorbing Stretch
- Smooth, Firm Hand, Folds Well Into Packs
- Minimum Break Strength: 15.6 kN (3,500 lbs)
- Weight: 2.49 lbs per 100 feet



**BEAVER TECHNOLOGY SERVICES**

Phone: +61 2 8811 3500  
Web: [www.beavergrp.com.au](http://www.beavergrp.com.au)



Distributor:



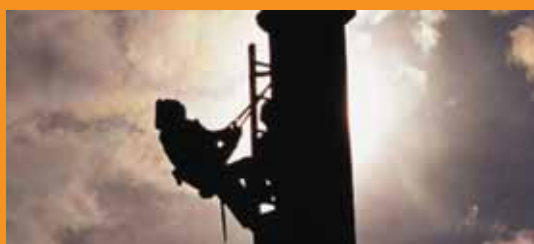
# BEAVER TECHNOLOGY SERVICES

## SELF-RETRACTING LIFELINES (SRL)



The IKAR & BEST-HOIST range of Self Retracting Lifelines (SRL) are manufactured with maximum durability in mind using superior technology for the demanding workplaces within the industry.

All components critical for the device to function correctly and effectively are made from rust proof material, aluminium or stainless steel and shockproof plastic. This sturdy method of construction ensures that the devices are always reliable in use and is of low maintenance.





## SELF-RETRACTING LIFELINES (SRL)

SRL's are available with either Stainless Steel or Galvanised 3/16" Cable and on smaller models in Webbing Strap.

All Self Retracting Lifelines feature Rotational Snap Hooks which prevent the Webbing Strap or Wire Rope from twisting whilst in use.

Part No.	Connecting device	Housing	Weight
HWB 2	2.00 m Web	Aluminium	0.8 kg
HWB 2,5	2.50 m Web	Aluminium	1.2 kg
HWB 3,5	3.50 m Web	Aluminium	1.4 kg
HWPB 3,5	3.50 m Web	Plastic	1.2 kg
HWPB 5,5	5.50 m Web	Plastic	1.5 kg
HWPB 7	7.00 m Web	Plastic	1.8 kg
HWPB 9	9.00 m Web	Plastic	2.3 kg
HWPB 12	12.00 m Web	Plastic	3.4 kg
HWPB 15	15.00 m Web	Plastic	4.8 kg
HWS 4,5	4.50 m Steelrope	Aluminium	2.7 kg
HWS 6	6.00 m Steelrope	Aluminium	3.0 kg
HWS 9	9.00 m Steelrope	Aluminium	3.7 kg
HWS 12	12.00 m Steelrope	Aluminium	5.4 kg
HWS 18	18.00 m Steelrope	Aluminium	6.9 kg
HWS 24	24.00 m Steelrope	Aluminium	8.4 kg
HWPS 3	3.00 m Steelrope	Plastic	1.9 kg
HWPS 4,5	4.50 m Steelrope	Plastic	2.1 kg
HWPS 6	6.00 m Steelrope	Plastic	2.5 kg
HWPS 9	9.00 m Steelrope	Plastic	3.2 kg
HWPS 12	12.00 m Steelrope	Plastic	4.9 kg
HWPS 18	18.00 m Steelrope	Plastic	6.3 kg
HWPS 24	24.00 m Steelrope	Plastic	7.3 kg



**IKAR fall protection systems function in any location position and have been tested in a simulated fall trial over an edge.**

## SELF-RETRACTING LIFELINES (SRL) WITH AUTOMATIC LOWERING



Automatic Lowering Self-Retracting Lifelines (SRL) operate like any other SRL's but have the added feature of automatically lowering the user at an approximate speed of 0.9m/s after fall arrest

Part No.	Connecting device	Housing	Weight
HAS 16	16m Steelrope	Aluminium	11.0 kg
HAS 30	30m Steelrope	Aluminium	15.0 kg





# BEAVER TECHNOLOGY SERVICES

## WINCHES WITH RESCUE CAPABILITY



The IKAR & BEST-HOIST range of Rescue and Recovery Winches are manufactured with maximum durability in mind using superior technology for the demanding workplaces within the industry.

All components critical for the device to function correctly and effectively are made from rust proof material, aluminium or stainless steel and shockproof plastic. This sturdy method of construction ensures that the devices are always reliable in use and of low maintenance.



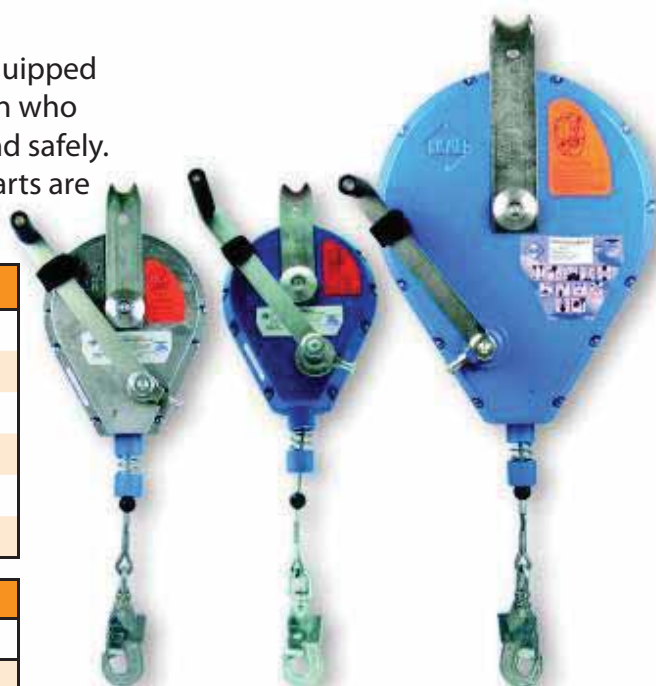
# WINCHES WITH RESCUE CAPABILITY

Winches with Rescue Capabilities are available with Stainless Steel or Galvanised Wire Rope Cable with sizes ranging from 12m to 90m as standard.

IKAR height-safety devices with rescue hoisting facility are equipped with a winching unit. In case of a rescue after a fall, the person who has suffered the accident can therefore be rescued quickly and safely. The unit is completely closed and has no wearing parts. All parts are made from stainless steel, aluminum or shockproof plastic.

Part No.	Connecting device	Housing	Weight
HRA 12	12m Steelrope	Aluminium	7.0 kg
HRA 18	18m Steelrope	Aluminium	11.5 kg
HRA 24	24m Steelrope	Aluminium	16.0 kg
HRA 33	30m Steelrope	Aluminium	21.0 kg
HRA 42	42m Steelrope	Aluminium	40.0 kg
HRA 60	60m Steelrope	Aluminium	43.0 kg

Accessories:	
S30	Winch chain drive, available for all HRA devices
54/WHG	HRA wall holder, available for all HRA devices



The winch chain enables easy use of the winch in the HRA device, even if the load point is located very high.

HRA wall holder quick-release holder for wall mounting all HRA devices from 9.5 - 24m.



PRO-Series winches are available in a variety of cable capacities with your choice of cable length, size , and type. These winches are specifically designed for personnel handling in a wide range of confined space, fall protection , and rescue applications.

Part No.	Connecting device	Housing	Weight
60002	18m Stainless Steelrope	High Impact Plastic	14.0 kg
60004	30m Stainless Steelrope	High Impact Plastic	15.2 kg
60003	18m Galvanised Steelrope	High Impact Plastic	14.0 kg
60005	30m Galvanised Steelrope	High Impact Plastic	15.2 kg
60010	45m Stainless Steelrope	High Impact Plastic	18.0 kg
60012	60m Stainless Steelrope	High Impact Plastic	19.5 kg
60011	45m Galvanised Steelrope	High Impact Plastic	18.0 kg
60013	60m Galvanised Steelrope	High Impact Plastic	19.5 kg
60018	76m Stainless Steelrope	High Impact Plastic	22.3 kg
60020	90m Stainless Steelrope	High Impact Plastic	23.8 kg
60019	76m Galvanised Steelrope	High Impact Plastic	22.3 kg
60021	90m Galvanised Steelrope	High Impact Plastic	23.8 kg





# BEAVER TECHNOLOGY SERVICES

## ABSEILING DEVICES



The IKAR range of Abseiling devices are manufactured with maximum durability and minimum weight in mind using superior technology for the demanding workplaces within the industry.

All components critical for the device to function correctly and effectively are made from rust proof material, aluminium or stainless steel and shockproof plastic. This sturdy method of construction ensures that the devices are always reliable in use and of low maintenance.





## ABSEILING DEVICES

This abseiling device has an automatic speed regulation. The brake controlled by centrifugal forces keeps the speed of the device constant during the entire abseiling process and enables a rapid and safe rescue.

Part No.	Suspension	Housing	Weight
ABS 3W	Swivel	Aluminium	1.2 kg
ABS 3R	Tube hook	Aluminium	1.4 kg

IKAR core casing rope

Part No.	Suspension	Diameter	Weight
KMS 10	Carabiner on both sides	Ø10mm	70g/m

- High functional safety
- Innovative construction, corrosion-resistant
- Resistant to damp, heat, cold
- Optional load fastening variants (tube hook, rotational hook)
- Abseiling speed approx. 0.9 m/sec.
- For abseiling heights up to 150 m
- Compact, stable size
- Extremely low own weight
- Does not cause undue wear or damage to the rope
- Tested for one person



## ABSEILING DEVICES WITH RESCUE HOISTING FACILITY

This abseiling device has an automatic speed regulation. The brake controlled by centrifugal forces keeps the speed of the device constant during the entire abseiling process and enables a rapid and safe rescue.

Part No.	Suspension	Housing	Weight
ABS 3WH	Swivel	Aluminium	1.9 kg
ABS 3RH	Tube hook	Aluminium	2.1 kg

IKAR core casing rope

Part No.	Suspension	Diameter	Weight
KMS 10	Carabiner on both sides	Ø10mm	70g/m

- High functional safety
- Innovative construction, corrosion-resistant
- Resistant to damp, heat, cold
- Integral rescue hoisting function using crank wheel
- Reverse lock which can latch into place
- Integrated shock absorber
- Optional load fastening variants (tube hook, rotational hook)
- Abseiling speed approx. 0.9 m/sec.
- For abseiling heights up to 150 m
- Maximum lifting height: 75 m
- Compact, stable size
- Extremely low own weight
- Does not cause undue wear or damage to the rope
- Tested for one person

