



1 Co-Wyn Cl Fountaindale NSW 2258  
Tel: 02 4336 1000  
Fax: 02 4389 1300  
Email: [info@formit.com.au](mailto:info@formit.com.au)  
[www.formit.com.au](http://www.formit.com.au)

Colours are a guide only and not for colour accuracy. We recommend checking your chosen colour against the actual sample of the product before purchasing.

Distributed by

© bluetonecreative  
www.bluetonecreative.com.au



2011

PORTABLE TOILETS + ACCESSORIES

# TABLE OF CONTENTS

About Formit	2
Why Formit?	3
Design Features	4
Merlin Ultra	5
Merlin Executive	7
PB28 Poly Body	9
SB59 Steel Body	11
Merlin ADU	13
Waste Tank	15
Wizz Wall	17
Trailer Mounted Toilet	18
Merlin Ultra Sewer Connect	19
Evacuation Valve	19
MFT3	20
Shower Internals	20
Mine Toilet	21
Bore Hole Shute	21
Hand Soap & Dispenser	22
Instant Hand Sanitiser	22
Deo Discs®	23
Porta Tab®	23
Porta-Pak® odour control sachets	24
Bio-Pak®	24
Replacement Parts	25

# ABOUT FORMIT

“Our toilets are made to meet Australian conditions. They’re all manufactured in Australia from the highest quality materials”



We’re Australia’s leading manufacturer of portable toilets. We’ve been in the portable toilet business since 1983, we’re wholly Australian-owned, our toilets are all manufactured in NSW, and we distribute them all around the world.

**Why Formit?**  
Because our toilets are made to meet Australian conditions. They’re all manufactured in Australia from the highest quality materials, and they all meet or exceed Australian safety and environmental standards.  
What’s more, we offer free advice, we deliver on time, and we even give you a two year warranty! All for a very reasonable fixed price. And when you call, you speak to an expert — someone who understands the industry and your needs.

- Top 5 Reasons**
1. Australian made and manufactured
  2. Nationwide distribution network
  3. Short delivery times anywhere in Australia — even on volume orders
  4. We want to help your business
  5. Call to speak with an expert



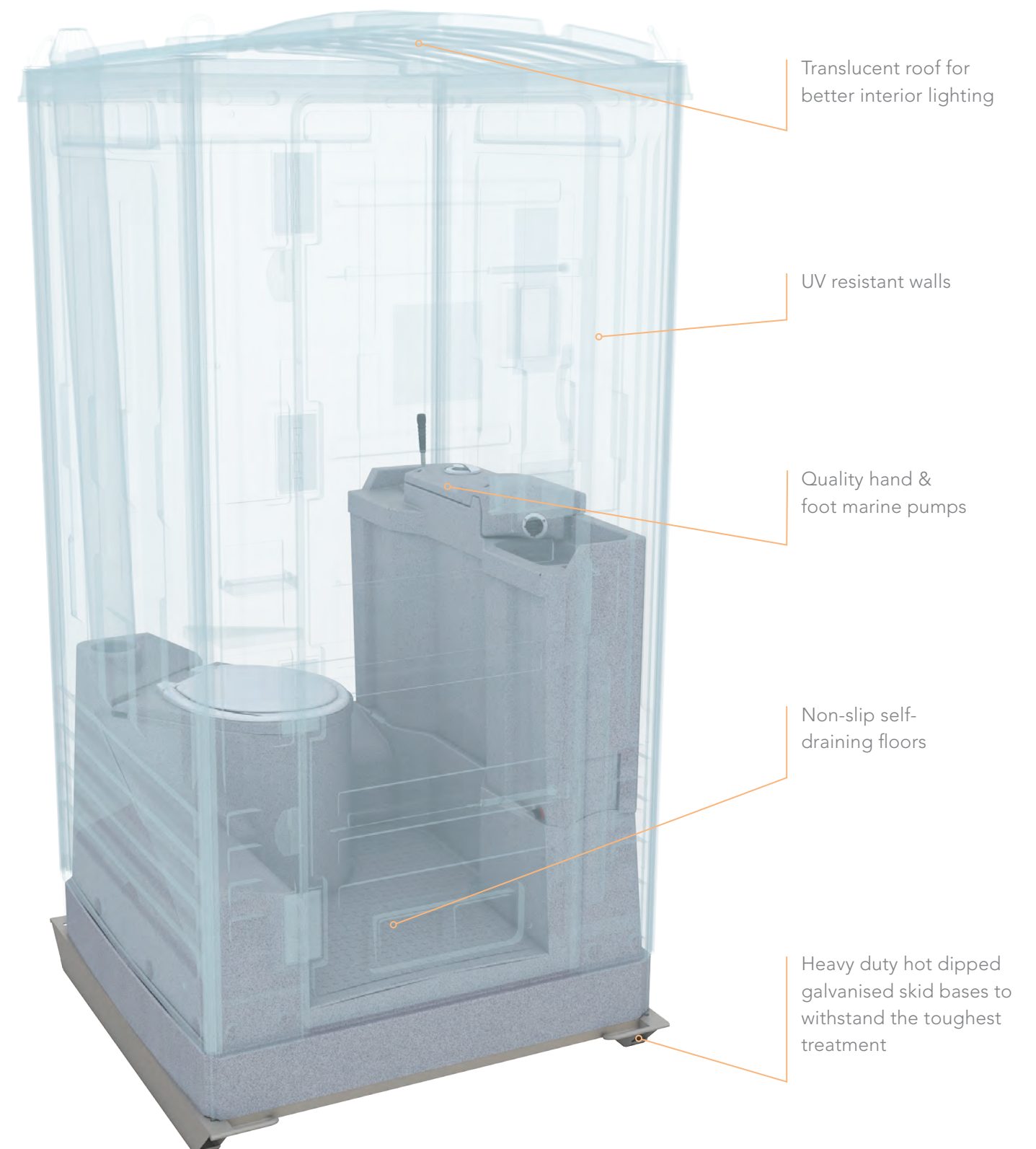
# WHY FORMIT



MERLIN ULTRA PORTABLE TOILET - LIGHT BLUE

- Large waste and freshwater tanks — With the best tank capacities on the market, Formit's toilets are ideal for events and large construction sites, as they require minimal service calls.
- Heavy duty UV resistant plastic — The Australian sun is unrelenting, so we make our toilets tough enough to deal with it, and then some... Our cabinets are all made from UV resistant, colour-fast polyethylene, so they won't crack or fade.
- Sewer Connect available — Perfect when a sewer connection is available, but a permanent toilet structure is not. Simply opt for a toilet fitted with Sewer Connect, and you can plumb it straight in.
- Trailer mounted available — The Merlin Ultra, Merlin Executive, PB28 and SB59 portable toilets can all be mounted on Formit's purpose-built Toilet Trailer, a hot-dipped galvanised, rego-ready trailer with rear legs for stability.
- Quality hand & foot marine pumps — All Formit toilets contain a marine-grade foot or hand pump, designed and manufactured to be reliable, long-lasting and easily serviced.
- Certified lifting systems available — For whenever you need to lift a toilet into position. You can get a lifting system for any of our toilet models, certified to meet OH&S requirements for many commercial, industrial and mining customer applications.
- Australian standards compliant — All our toilets are designed to exceed the various state and national standards, codes of practice and EPA requirements. So you can confidently use them, anywhere, anytime.

## FORMIT PORTABLE TOILET DESIGN FEATURES





# MERLIN ULTRA

HIGH CLASS DURABILITY



MERLIN ULTRA MK2 PORTABLE TOILET - GREEN

Want the longest lasting portable toilet for events and construction? You want the Merlin Ultra.

The Ultra is built tough, from the ground up. It has a tried-and-tested, durable construction, featuring galvanised steel skid and twin sheeted walls. And even its lifting lugs are tougher. Made from galvanised steel, they actually form part of the frame (they're connected to internal steel rods linked to the skid base), and they're engineer certified to meet Work Cover requirements.

It's also pleasant to use and easy to maintain, with an easy-clean, ergonomic interior, and a built-in fresh water unit for hand-washing and flushing, not to mention large waste and water tank storage units.

Of course, we haven't forgotten looks. The Ultra was designed with an attractive modern aesthetic, so it's at home at any event or construction site — even Ladies Day at the races!

## FEATURES & SPECIFICATIONS

### FEATURES

- Heavy duty skid base designed to withstand the toughest treatment
- Large waste tank (390L) and water holding tank (110L)
- Aesthetically attractive & highly durable
- UV resistant twin sheet walls
- Hinged one piece polypropylene bowl with stainless steel water seal flap
- Hinged seat assembly for easy access to waste tank
- Meets Australian Work Cover regulations
- Heavy duty, quality marine pump
- Non slip floor designed to self-drain

### SPECIFICATIONS

**WASTE TANK:** CAPACITY 390 LITRES OR 800 USES

**FRESH WATER TANK:** 110 LITRES

**SKID BASE:** INCORPORATES DRAG HOOKS

**LIFTING LUGS:** STANDARD

**REAR EVACUATION POINT:** ON REQUEST

**TRAILER MOUNTED:** ON REQUEST

**DIMENSIONS:** HEIGHT 2295MM, WIDTH 1115MM, DEPTH 1175MM

**DOOR OPENING:** 620MM

ALL MEASUREMENTS ARE APPROXIMATIONS ONLY AND ARE SUBJECT TO VARIATION.

### INTERNAL OPTIONS

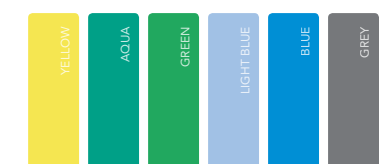
The Merlin Ultra features a range of internal unit options to suit your needs



MERLIN ULTRA - HAND OPERATED



### WALL COLOURS



### ROOF COLOUR

TRANSLUCENT WHITE



# MERLIN EXECUTIVE

JOBSITE ON A BUDGET



MERLIN EXECUTIVE PORTABLE TOILET - LIGHT BLUE

Lightweight, durable and very affordable, the Executive was designed and built specifically with the job site in mind.

It may be one of the most affordable toilets on the market, but there's been absolutely no compromise on quality. The Executive boasts an impressive 390 litre waste capacity, freshwater flushing, UV resistant single-skin walls and an all-new aesthetically pleasing look.

And if that's not enough, you can option it up with a lifting system, a foot pump system, evacuation valves, even trailers!

Needless to say, the Executive meets all EPA and Work Cover Regulations throughout Australia, including waste holding and lifting capabilities.

## FEATURES & SPECIFICATIONS

### FEATURES

- Fresh water flushing
- Large 390L waste
- Large 110L freshwater capacity
- New modern look
- UV resistant walls
- Modern, spacious easy-clean interior
- Polypropylene hinged bowl and stainless steel wet seal flap assembly
- Meets Australian Work Cover & EPA regulations
- Quality hand & foot marine pump
- Non slip self-draining floor
- Heavy duty steel skids
- Tough, lightweight cabinet

### SPECIFICATIONS

**WASTE TANK:** CAPACITY 390 LITRES

**FRESH WATER TANK:** 110 LITRES

**SKID BASE:** STEEL

**DIMENSIONS:** HEIGHT 2290MM, WIDTH 1140MM, DEPTH 1130MM

**DOOR OPENING:** 600MM

ALL MEASUREMENTS ARE APPROXIMATIONS ONLY AND ARE SUBJECT TO VARIATION.

### INTERNAL OPTIONS

The Merlin Executive features a range of internal unit options to suit your needs



MERLIN EXECUTIVE - FOOT OPERATED



MERLIN EXECUTIVE - HAND OPERATED



MERLIN EXECUTIVE - LIFT



### WALL COLOURS

- AQUA
- GREEN
- LIGHT BLUE
- BLUE
- GREY

### ROOF COLOUR

- TRANSLUCENT WHITE



# FORMIT PB28 POLY BODY

TOUGHER THAN TOUGH



FORMIT PB28 PORTABLE TOILET - BLUE

No matter how tough the crowd — whether it's a construction site or an event — the PB28 is tougher. And comfortable too!

The Formit PB28 is one of the toughest, hardest-working portable toilets available in Australia. We build all our toilets tough, but this one really is as 'tough as old nails'. It's engineered specifically to take whatever punishment is dished out — from both users and the elements. Galvanised steel skid and durable high density, UV-resistant polyethylene walls are just the start. It also features Australia's first one-piece bowl and seat surround in polypropylene for maximum durability, as well as a marine-grade flush pump.

And let's not forget comfort and hygiene. (The PB28 certainly doesn't!) Its interior is very spacious, and it features large waste and water tank storage units, as well as a fresh water hand-wash flush unit. So it's safer and healthier for workers and users alike.

No wonder it's such a common sight at all the major sporting events, including the 2000 Sydney Olympics and the 2006 Melbourne Commonwealth Games.

## FEATURES & SPECIFICATIONS

### INTERNAL FEATURES

- Heavy duty steel skid base designed to withstand the toughest treatment
- Large 356L waste
- Large 125L freshwater capacity
- High density polyethylene, UV stabilised, colour-fast walls
- Hinged polypropylene bowl and seat surround
- Non-skid, easy-clean, self-draining floor
- Marine grade pump provides flushing water to the toilet bowl
- Hand basin pump with vertical action to operate fresh water flush system
- 150mm Inspection port for water filling

### SPECIFICATIONS

**WASTE TANK:** 356 LITRES OR 750 USES

**FRESH WATER TANK:** 125 LITRES

**SKID BASE:** INCORPORATES DRAG HOOKS

**LIFTING LUGS:** STANDARD

**TRAILER MOUNTED:** ON REQUEST

**WEIGHT:** 117KGS

**DIMENSIONS:** HEIGHT 2220MM, WIDTH 1200MM, DEPTH 1220MM

**DOOR OPENING:** 600MM

ALL MEASUREMENTS ARE APPROXIMATIONS ONLY AND ARE SUBJECT TO VARIATION.

### INTERNAL OPTIONS

Internal unit options to suit your needs



FORMIT PB28 - HAND OPERATED



**WALL COLOUR**

BLUE

**ROOF COLOUR**

TRANSLUCENT WHITE

FORMIT PB28 - HAND OPERATED





# FORMIT SB59 STEEL BODY

## THE STRENGTH OF STEEL



FORMIT SB59 PORTABLE TOILET - COLORBOND WHITE/GREEN ROOF

'The strength of steel!' Nothing's sturdier, steadier and more durable than the Formit SB59. Not to mention cost effective. It's the only toilet to choose for those construction sites that routinely punish their gear.

All Formit toilets are tough, but this one really takes the cake. It's heavy — very heavy — so it stays where you put it; it won't go walkabout and it won't topple over. And it was designed specifically to be the 'tough-nut' of the range, with a heavy-duty galvanised steel frame, Colorbond exterior walls and polypropylene interior.

Of course, like all Formit's toilets, it also features sturdy galvanised lifting lugs that form part of the structural assembly, as well as a fresh water hand-wash flush unit, providing a safer, healthier environment for everyone.

## FEATURES & SPECIFICATIONS

### FEATURES

- Heavy duty steel skid base designed to withstand the toughest treatment
- Large 370L waste tank
- Large 90L freshwater tank
- Hinged polypropylene bowl and seat surround
- Non-skid, easy-clean, self-draining floor
- Marine grade pump provides flushing water to the toilet bowl
- Hand basin pump with vertical action to operate fresh water flush system
- 150mm Inspection port for water filling

### SPECIFICATIONS

**WASTE TANK:** CAPACITY 370 LITRES OR 700 USES

**FRESH WATER TANK:** 90 LITRES

**SKID BASE:** INCORPORATES DRAG HOOKS

**LIFTING LUGS:** STANDARD

**REAR EVACUATION POINT:** ON REQUEST

**TRAILER MOUNTED:** AVAILABLE ON REQUEST

**WEIGHT:** 140KGS

**DIMENSIONS:** HEIGHT 2375MM, WIDTH 1020MM, DEPTH 1230MM

**DOOR OPENING:** 650MM

ALL MEASUREMENTS ARE APPROXIMATIONS ONLY AND ARE SUBJECT TO VARIATION.

### INTERNAL OPTIONS

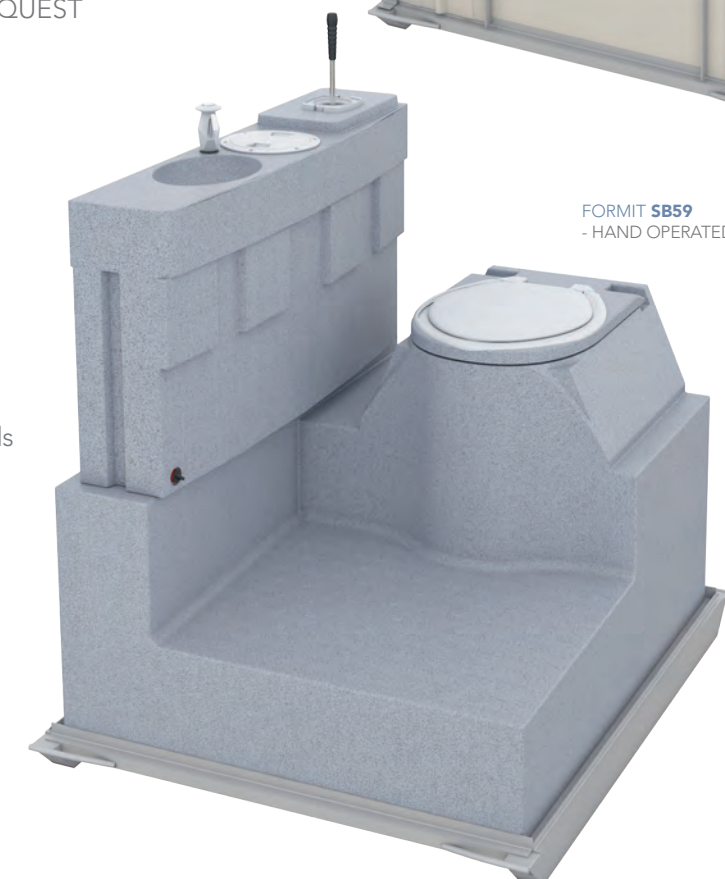
Internal unit options to suit your needs



FORMIT SB59 - HAND OPERATED



FORMIT SB59 - HAND OPERATED



**WALL COLOUR**

COLORBOND WHITE

**ROOF COLOUR**

GREEN

NEW

# FORMIT ADU

AUSTRALIAN DISABLED UNIT



FORMIT ADU (AUSTRALIAN DISABLED UNIT) PORTABLE TOILET - BLUE

The Australian Disabled Unit (ADU) is the country's premier special needs portable toilet. Built to exceed Australian standards, it's a must-have for event market suppliers.

The ADU is unique in the Australian market in that it was designed specifically with Australian standards in mind. Wheelchair access is a breeze, with flat ground level entry floor, wide, self-closing door and cantilevered hand basin. Plus it also features a fully compliant, heavy duty stainless steel hand railing, easy-to-use flipper hand-wash pump, and exceptionally strong fibreglass internal construction.

Outside, rugged polyethylene walls promise — and deliver — years of durable use. And a one piece, seamless roof provides extra strength and stability. It's also surprisingly easy to move, with handgrips on each side and built in corner grips.

## FEATURES & SPECIFICATIONS

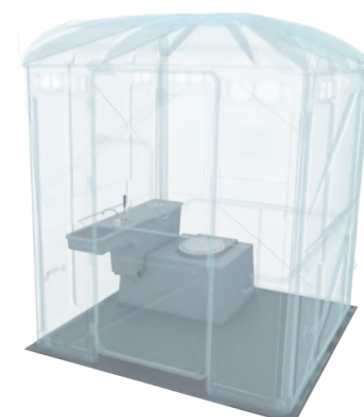
### FEATURES

- Wide self-closing door
- Flat floor design — no ramps
- Meets Australian standards
- Translucent roof provides bright interior
- Interior specifically designed for special needs
- Large waste and fresh water capacity
- Strong fibreglass internal components
- Special cantilevered hand basin water tank allowing wheelchair access
- Flipper hand-wash pumps for ease of use
- Heavy duty stainless steel hand railing positioned and shaped in compliance with the Australian Standard
- Easy clean compartment
- Superior ventilation
- Optional lift system also available

ALL MEASUREMENTS ARE APPROXIMATIONS ONLY  
AND ARE SUBJECT TO VARIATION.

### INTERNAL OPTIONS

Internal unit options to suit your needs



FORMIT ADU - HAND OPERATED



FORMIT ADU -  
HAND OPERATED

### SPECIFICATIONS

**WASTE TANK:** CAPACITY 190 LITRES  
**FRESH WATER TANK:** 100 LITRES  
**DIMENSIONS:** HEIGHT 2305MM, WIDTH 1956MM, DEPTH 1956MM  
**DOOR OPENING:** 820MM

**WALL  
COLOUR**

BLUE

**ROOF  
COLOUR**

TRANSLUCENT WHITE



# FORMIT WASTE TANK

## WASTE STORAGE TANK SYSTEM



FORMIT WASTE TANK 4000L - GREY

Large ablution block, but no sewer connection? A Formit Waste Tank is the hygienic, long-lasting solution.

The Formit Waste Tank is an engineering-certified effluent tank, designed to sit underneath large ablution blocks — particularly on large construction sites without a sewer connection (or perhaps a special event or an army camp).

A sturdy, durable, rust-free construction, the Waste Tank is engineered from rigid polyethylene surrounded by a heavy-duty steel frame, and it's rated to support a building mass of up to 7000kg plus 12 persons.

Available in three different sizes (2000L, 4000L & 6000L), the Waste Tank is suited to ablution block buildings up to approximately 6m long and 2.4m wide.

## FEATURES & SPECIFICATIONS

### FEATURES

- Heavy duty steel frame
- Special gusset reinforcing
- Engineer Certified No. E3577
- Certified to withstand 7000kg + 12 People
- 3 sizes to suit all applications
- Long-life polyethylene tanks will not rust
- Special locator tab/lift points
- Steel tow hook on all sizes
- Tank top connects to frame to avoid sagging
- Special double clamped triple wall connector hose on multi-tank models
- Special pump out port available

### 2000L TANK

**WASTE TANK:** 2000 LITRES

**APPROX. WEIGHT:** 227KG

**DIMENSIONS:** 1950MM LENGTH  
X 2400MM WIDTH X 660MM HEIGHT

**CARRYING CAPACITY:**  
1500KG + 6 PEOPLE

### 4000L TANK

**WASTE TANK:** 4000 LITRES

**APPROX. WEIGHT:** 453KG

**DIMENSIONS:** 3875MM LENGTH  
X 2400MM WIDTH X 660MM HEIGHT

**CARRYING CAPACITY:**  
5000KG + 8 PEOPLE

### 6000L TANK

**WASTE TANK:** 6000 LITRES

**APPROX. WEIGHT:** 776KG

**DIMENSIONS:** 5860MM LENGTH  
X 2400MM WIDTH X 660MM HEIGHT

**CARRYING CAPACITY:**  
7000KG + 12 PEOPLE

ALL MEASUREMENTS ARE APPROXIMATIONS ONLY AND ARE SUBJECT TO VARIATION.



FORMIT WASTE TANK  
- 2000L (2,000 LITRE)

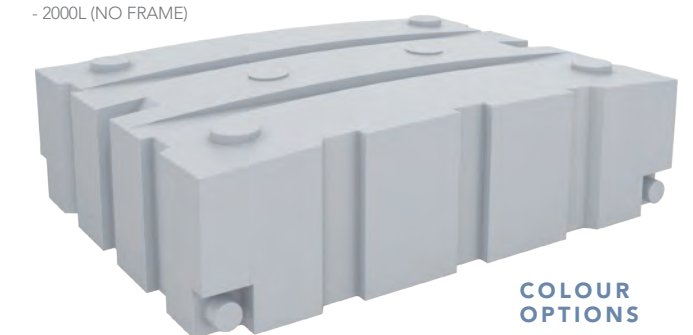


FORMIT WASTE TANK  
- 4000L (4,000 LITRE)



FORMIT WASTE TANK  
- 6000L (6,000 LITRE)

FORMIT WASTE TANK  
- 2000L (NO FRAME)



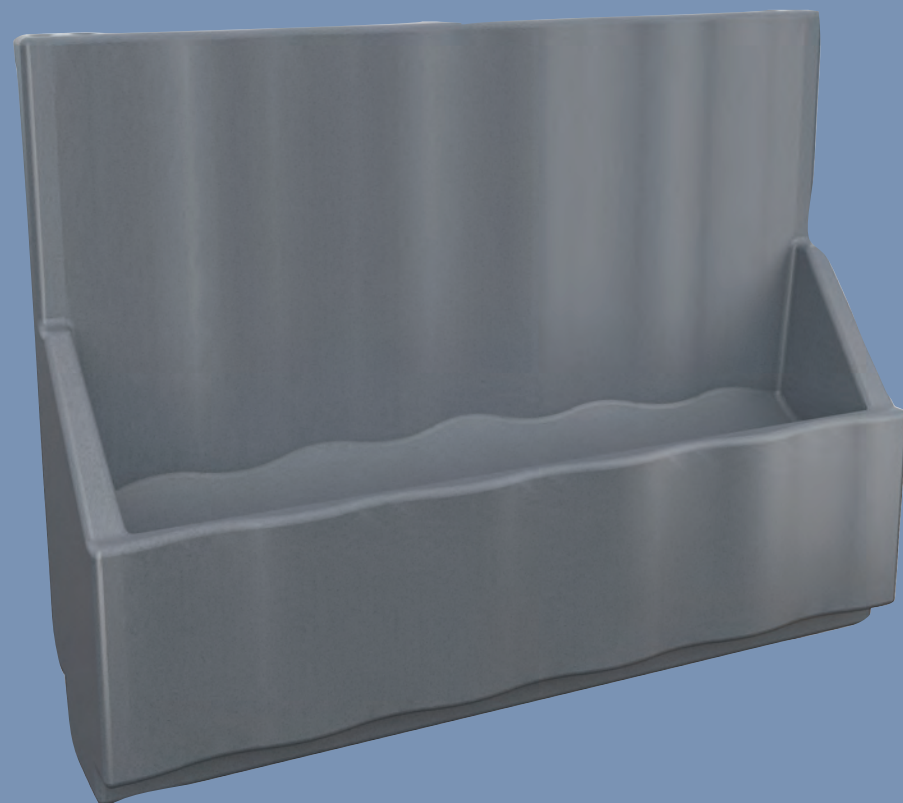
COLOUR  
OPTIONS

GREY

NEW

# FORMIT WIZZ WALL

PORTABLE URINAL SYSTEM



FORMIT WIZZ WALL - GREY

## COLOUR OPTIONS\*



\*CUSTOM COLOURS AVAILABLE UPON ENQUIRY

Now every event can have a urinal, whether or not there's a sewer connection or permanent structure. So no more line-ups for the men's!

The Wizz Wall is a must-have for large events. It's a heavy duty, non-rusting polyethylene urinal, with a large waste tank capacity. And it's designed and built right here in Australia, to meet all Australian OH&S requirements. Rather than wasting space on a host of regular portable toilets, you can simply supply one or two Wizz Wall urinals (they can be interconnected), and a couple of regulars, and you're done.

## KEY FEATURES

- 650 litre capacity
- Facilitates 5 people
- Interlocks for ease of transporting
- Can attach to temporary fence panels

## SPECIFICATIONS

LENGTH: 2350MM

WIDTH: 580MM

HEIGHT: 1800MM

CAPACITY: 650 LITRES

RIM HEIGHT: 700MM

ALL MEASUREMENTS ARE APPROXIMATIONS ONLY AND ARE SUBJECT TO VARIATION.

# FORMIT TOILET TRAILER

EVEN MORE PORTABLE



FORMIT TOILET TRAILER

Sometimes even a portable toilet isn't mobile enough. If you need to move your portable toilet frequently, why not mount it on a purpose-built trailer?

The Formit Toilet Trailer is a lot more than just a way to transport a portable toilet. It was designed specifically to function as a permanent or semi-permanent mount. Simply park the trailer, and you're done.

Compatible with Formit's Merlin Ultra, Merlin Executive, PB28 and SB59 portable toilets, the Toilet Trailer is hot-dipped galvanised for maximum rust-resistance, and RTA rego-ready.

## KEY FEATURES

- Brake lights, tail lights and indicators
- Marine grade self-locking, swing away mounted jockey wheel
- 2 rear legs for stability (adjustable)
- Closed in mudguards
- All supplied ready for registration



## MERLIN ULTRA SEWER CONNECT



Perfect when a sewer connection is available, but a permanent toilet structure is not.

The Sewer Connect is the same as the standard Merlin Ultra on the outside, but it's equipped like a permanent toilet on the inside.

- High density polyethylene twin skin walls
- Cabinet height: 2200mm
- Fully plumbed, easy-connect waste outlet
- Hand-wash basin
- Dual flush cistern
- Weight: approx 130kg
- Abundance of natural light
- Lifting points available if required

## FORMIT MFT3 FIBREGLASS INTERNAL



Consisting of just the durable fibreglass fresh water tank and waste tank with polypropylene seat, bowl, hand-basin, and associated pumps, the MFT3 is a 'compact' that's designed specifically for use in portable buildings (like site offices), shipping containers, etc., where no sewer connection is available.

- Fresh water flush & hand wash
- 73L fresh water capacity
- 180L waste capacity
- Strong and durable fibreglass
- Optional rear slide valve

## FORMIT EVACUATION VALVE

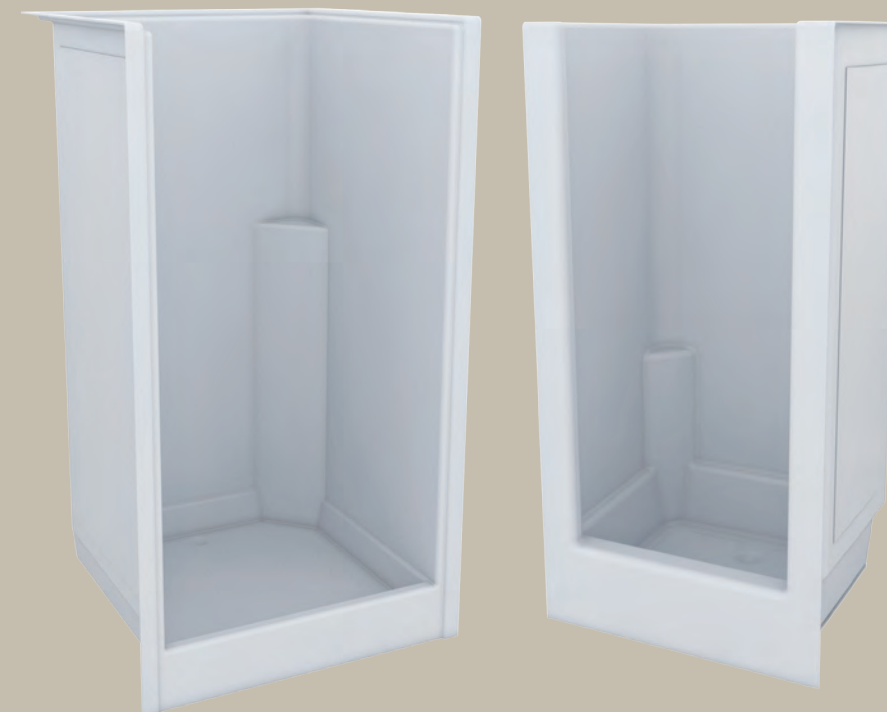


Dispose of waste simply and easily: Just fit an evacuation valve.

The Formit Evacuation Valve is a rear slide valve that can be fitted to the back of any portable toilet in the Formit range. It's a lockable/tamper-proof gate valve, designed to accommodate a large diameter flexible hose for gravity-draining or pumping of waste.

- Can be fitted to all Formit toilets
- Repair kits available
- Lockable, heavy duty, steel framed door
- Accommodates large diameter waste hose

## FORMIT SHOWER INTERNAL FIBREGLASS INTERNAL



The ideal solution for construction sites and events that have mains water, but no permanent showering facilities.

The shower unit is easy to clean with a low maintenance surface, and also features a built in soap holder.

The heavy duty fibreglass construction makes this unit a durable yet comfortable and affordable portable shower for any site with mains water access.

The portable shower comes in three sizes to suit your needs:

- 1000mm (W) x 930mm (D)
- 1000mm (W) x 785mm (D)
- 900mm (W) x 760mm (D)

## FORMIT MINE TOILET



Australia's purpose-built toilet for mining sites.

Designed and manufactured specifically for mining applications, every aspect of the Mine Toilet's construction adheres to strict OH&S regulations. Right down to the rivets. With polyethylene heavy-duty plastic water and waste tanks, and galvanised steel exterior, it contains absolutely no aluminium — so it physically cannot cause sparks.

- Polyethylene interior
- Galvanised steel exterior
- Fork lift tyne holes, towing points & tie down points
- Sealed flushing system

## HAND CLEANING



The convenient Walex Hand Soap Dispenser is easy to attach to the inside of any portable toilet. And the soap itself — Walex Exodor Pink Lotion Cleanser — is fresh and effective, requiring just 2-4ml per use.

So from an 800ml bag-n-box system, you get up to 400 individual uses! Or if you'd prefer a water-free (and completely mess-free) alternative, try the Walex Exodor Instant Hand Sanitizer. It requires absolutely no water, and it evaporates in just 15 seconds after application. Users just rub it in, and it kills 99.9% of germs in an instant!

## FORMIT BORE HOLE SHUTE



Eco-toilet or long-drop, the Formit Bore Hole Shute is the ideal toilet to go on top.

Manufactured from heavy duty polyethylene, the Formit Bore Hole Shute offers a large flange at its base to ensure maximum stability. It comes complete with seat and lid, and is compatible with all standard toilet seats.

- Large base flange for maximum stability
- Fits standard size toilet seat

## ANOTEC BLUE®



The most effective and economical liquid toilet additive on the market. Controls odours and break downs waste solids, like no other.

Anotec Blue SFTY-100™ liquid additive quickly neutralises offensive odours, and breaks down paper and waste. It uses ground-breaking chemical engineering technologies — a combination of Anotec's trademarked SIAT® technology and a catalytic waste breakdown process — to ensure your customers enjoy a fresh and clean smelling portable toilet for the duration of its hire. It also helps prevent blocked lines and pipes during pump-out and cleaning.



## DEO DISCS®



Continually freshen the air inside your portable toilets with a disc that hangs on the wall.

Designed with a fragrance that lasts for several weeks, Walex® Exodor® Supersize Deodorising Discs will make your toilets smell better, longer. All you need to do is conceal the disc on the reverse side of the vent pipe on a plastic hook, and it does the rest.

- Available in a variety of scents
- Available in 100 disc packs, 5 packs per case
- Lasts up to 30 days

## PORTA-PAK® ODOUR CONTROL SACHETS



Rapid, effective deodorising technology.

The Walex® Exodor® Porta-Pak® utilises advanced deodorant technology to provide long-term odour control. A convenient, non-staining drop-in sachet, it requires absolutely no direct skin-contact and disperses quickly in the waste tank.

- Innovative resealable weatherproof packaging
- Available in 50 sachet packs, 5 packs per case
- Quick dispersion in waste tank
- Three long-lasting fragrances
- Long shelf life

## PORTA TAB®



Drop in a rapid-dissolve tablet for deodorising that starts working immediately.

With Porta Tab®, deodorising your portable toilets is an easy, one-step process — and completely mess-free. Just drop a tablet into the waste tank, and its effervescent, quick-dissolve, self-mixing formula gets to work in an instant. It's as simple as that.

- Powered by WAVE 2 Technology™ for long-term odour control
- Biodegradable and Formaldehyde-free
- EVERBLUE™ Non-Staining Deep Blue Colour

## BIO-PAK®



Environmentally friendly deodorising.

With their highly effective natural enzyme agents, Bio-Pak tablets not only deodorise your portable toilet waste tanks and septic tanks, but also break down waste and paper, to completely liquefy the waste tank contents. All without harming the environment!

- Starts working immediately to control odours
- Rapidly breaks down waste & paper
- Environmentally friendly
- Non-staining colour

## FORMIT SPARE PARTS



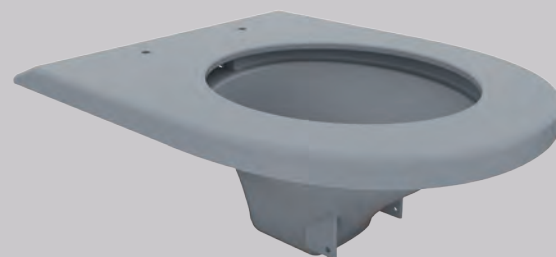
**PUMPS** - Replacement Pumps to Suit All Models



**PUMP DIAPHRAGM KITS** - Diaphragms to fit all current and older model Formit Toilets



**ROOFS** - Roofs to suit all current toilet models and older Formit & Synergy models



**TOILET BOWLS** - Replacement bowls and parts available for current models

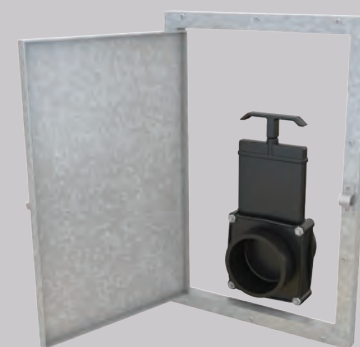


**TOILET SEATS** - Universal toilet seats available for all toilets

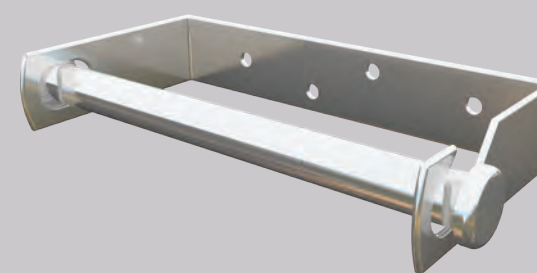


**HAND BASIN PUMP & KITS** - Trojan Replacement Pumps and Valve repair kits

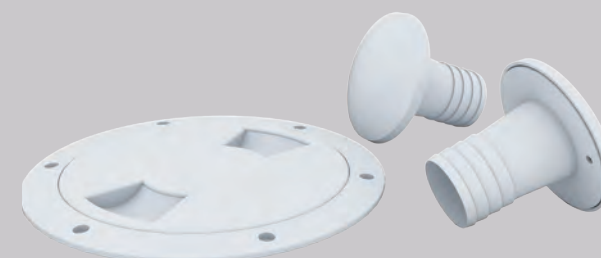
## FORMIT SPARE PARTS



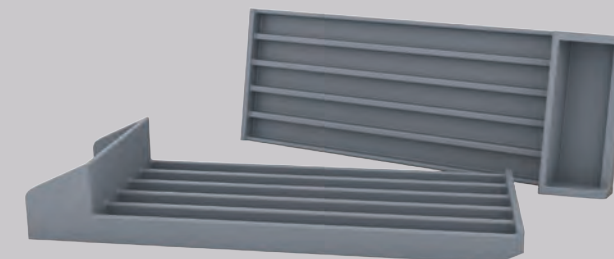
**EVACUATION VALVES** - Replacement Slide Valves and Seal kits available



**TOILET PAPER DISPENSERS** - Both Toilet Roll and Interleaf toilet dispensers available



**INSPECTION PORTS & WATER FILLERS** - Water filling ports available all models



**DOOR LOCK SLIDES** - Door Lock Slides available for all current models



**PUMP HANDLES** - Replacement Pump Handles for all current and past model toilets



As all of our toilets are manufactured in Australia all parts for toilets are readily available right down to the last rivet.