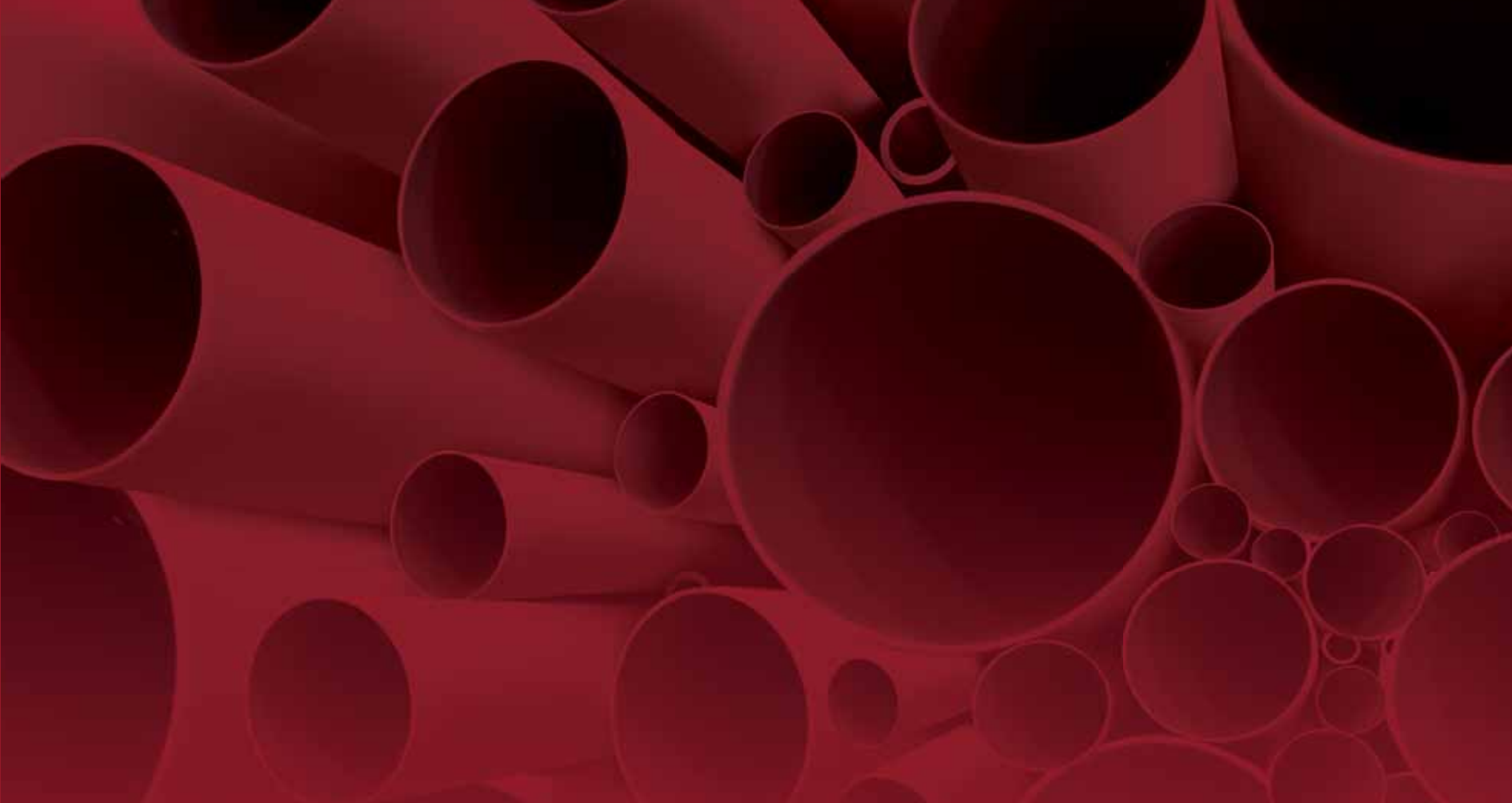


Confidential and Proprietary Information

This literature contains information that is proprietary to Tamdid Pipes® and its associated companies and subsidiaries. Transmittal, receipt, or possession of this document does not express license, or imply rights to use, sell, design, manufacture, or to have manufactured, any product, concept, or service from this information. No reproduction, publication, or disclosure of this information, in whole, or in part, electronic or otherwise, shall be made without prior written authorization of an Officer of Tamdid Pipes®. Authorized transfer of this document from the custody and control of Tamdid Pipes® constitutes a loan for limited purposes, and this document must be returned to Tamdid Pipes® upon request, and in all events, upon completion of the purpose(s) of the loan.



Group Profile - Adraj Holding Co.

In October 2005 “Adraj Holding Co.” has been founded with the objective to grab the emerging opportunity from the fast development in Saudi Arabia and the accompanying surge in construction & industrial activities and the underlying infrastructure and become a leading company in the fields of manufacturing, construction and real estate.

To achieve its objectives Adraj Holding Co. has opted to set up different companies / branches including factories called internally “Business Units”, each specialized in different lines of activities and staffed by experienced highly qualified staff with the experience of work in the local as well as the international environment.

Adraj Holding Co. has its Corporate Head Office in Al-Khobar, and comprises six “Business Units”.



Group Profile - Business Units

Tamdid Pipes & Equipment Factory Co.:

Specialized in the manufacturing Glass Fiber Reinforced Polyester (GRP), Glass Fiber Reinforced Vinylester (GRV), Glass Fiber Reinforced Epoxy (GRE), GRP Tanks, Manhole Liners, Structural Manholes, as well as Fiberglass Spools. Tamdid Pipes® offers customer assistance in specifications, engineering, design, prefabrication & site supervision.

Al Abniah Precast Concrete Buildings Factory:

Specialized in the manufacturing of precast concrete using the latest technologies available for production systems, equipment, and techniques to engineer, produce, deliver and install the highest quality products with the minimum required human resources input such as: Architectural Cladding, Internal Walls, Hollow Core Slabs, Structural Elements, Boundary Walls, and Miscellaneous Products with a paid-up capital of SR 43 million.

Shad Contracting Co. Ltd.:

A Contracting company with a paid up capital of SR 1.5 million. The objectives of the company is to construct the present own projects and thereafter, execute construction projects in the open market.

Zomorod Real Estate Investment Co.:

A company specialized in real estate activities, including buying, management, development, operations and services, with a paid-up capital of SR 0.5 million.



Group Profile

Awzan Transportation Co. Ltd.:

A Transportation company with a paid up capital of SR 5 million. The objectives of the company are to transport goods & passengers.

Saudi Cranes & Steel Works Factory Ltd.:

The Company is specialized in the manufacturing of overhead cranes, it has established itself as the approved and preferred vendor for supply of high quality overhead cranes to the local industries both in the public and private sector; its customer list includes distinguished customers such as Aramco, Sabic and SEC known for their very highly demanding quality standards and specifications.

The company is established with paid-up capital of SR 31.05 million.



Group Organization Chart

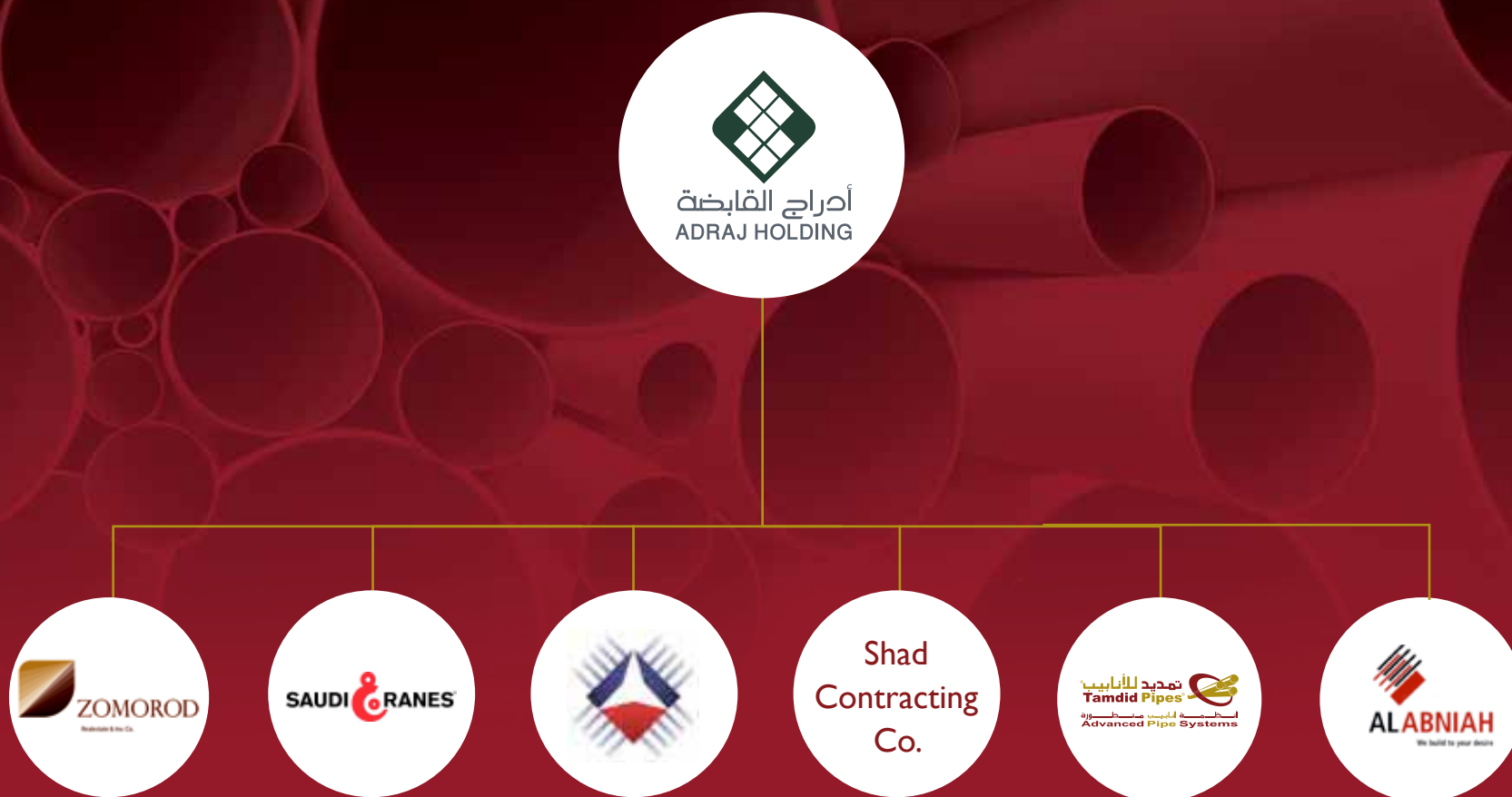


Table-1 / Tamdid Production Capacity

Production Output							Yearly	Yearly		Yearly			Yearly		
KG per 1		Speed	per	Yearly	Yearly		Capacity Production	Average Capacity		Yearly			Yearly		
DN	Meter Pipe	Meter/hour	24	Production	Production		Diameter Range	Diameter Range	Diameter	Production Capacity in Tons			Production Capacity in Km		
KG		hours	per diameter	per diameter			One Line	One Lines	Range	1 M/c	2 M/c	3 M/c	1 M/c	2 M/c	3 M/c
mm	KG	M/h	KG	TONS	Km		TONS	KM	mm-mm	TONS	TONS	TONS	Km	Km	Km
1	300	9.636	26.4	6,105	2,198	228	8,443	222	300-1000 mm	8,443	16,886	25,330	222	444	666
2	350	12.573	26.4	7,966	2,868	228									
3	400	15.916	26.4	10,085	3,630	228									
4	450	19.570	26.4	12,400	4,464	228									
5	500	23.931	26.4	15,163	5,459	228									
6	600	34.287	26.4	21,724	7,821	228									
7	700	46.087	24.6	27,254	9,811	213									
8	800	59.597	24.6	35,243	12,688	213									
9	900	74.867	24.6	44,273	15,938	213									
10	1,000	91.855	24.6	54,320	19,555	213									
1	1,100	110.612	22.0	58,403	21,025	190	32,710	154	1100-2000 mm	32,710	65,420	98,130	154	307	461
2	1,200	131.849	22.0	69,616	25,062	190									
3	1,300	154.121	22.0	81,376	29,295	190									
4	1,400	178.133	17.6	75,243	27,088	152									
5	1,500	203.915	16.7	81,827	29,458	144									
6	1,600	231.393	16.7	92,853	33,427	144									
7	1,700	261.696	15.8	99,486	35,815	137									
8	1,800	292.720	15.8	111,280	40,061	137									
9	1,900	325.519	15.0	116,874	42,075	129									
10	2,000	360.010	14.1	121,655	43,796	122									
1	2,100	396.249	13.2	125,532	45,191	114	52,280	91	2100-3000 mm	52,280	104,560	156,840	91	182	274
2	2,200	434.216	12.3	128,389	46,220	106									
3	2,300	475.387	11.4	130,522	46,988	99									
4	2,400	515.416	10.6	130,627	47,026	91									
5	2,500	558.611	10.6	141,574	50,967	91									
6	2,600	605.177	10.6	153,376	55,215	91									
7	2,700	650.240	9.7	151,064	54,383	84									
8	2,800	700.397	9.7	162,716	58,578	84									
9	2,900	750.604	8.8	158,528	57,070	76									
10	3,000	804.427	8.8	169,895	61,162	76									
1	3,100	856.205	7.9	162,747	58,589	68	65,393	59	3100-4000 mm	65,393	130,786	196,179	59	119	178
2	3,200	911.669	7.9	173,290	62,384	68									
3	3,300	968.818	7.9	184,153	66,295	68									
4	3,400	1029.854	7.9	195,755	70,472	68									
5	3,500	1090.539	7.0	184,257	66,333	61									
6	3,600	1155.247	7.0	195,191	70,269	61									
7	3,700	1217.185	6.2	179,949	64,782	53									
8	3,800	1283.087	6.2	189,692	68,289	53									
9	3,900	1353.197	5.3	171,477	61,732	46									
10	4,000	1420.164	5.3	179,963	64,787	46									

Company Profile

Tamdid Pipes & Equipment Factory Co.®

Tamdid Pipes® was established in 2008, in Ad-Dammam Industrial City-2, Kingdom of Saudi Arabia, with product lines centering on Glass Fiber Reinforced Polyester (GRP), Glass Fiber Reinforced Vinylester (GRV), Glass Fiber Reinforced Epoxy (GRE), GRP Tanks, Manhole Liners, Structural Manholes, as well as Fiberglass Spools. Tamdid Pipes® offers customer assistance in specifications, engineering, design, prefabrication & site supervision. Tamdid occupies 122,000 square meters located on BS4 on lands 1,2,3,4,5 & 6. Currently, Tamdid operates 6 production Lines; 4 for GRP products & 2 for GRE products additional to Large capacity of GRP/ GRE Fittings and spooling & special items.

Tamdid has a yearly capacity of 18 thousand tons per year per line leads to a total yearly output of 108 thousand tons based on average diameter size. Shifting the lines to large range of diameters, a line is capable to produce 40 thousand tons per year leads to total yearly capacity of 240 thousand tons per year included fittings, spooling, all kind of tanks and special elements. Tamdid's capacity output per diameter illustrated in Table- I.

The technical support is provided by the world's leaders in their respective technologies: TechnoBell London LTD who is the technology suppliers for GRP, GRV, and GRE pipe systems. Tamdid Pipes® manufactures under the strict Quality guidelines of ISO 9001-2000, incorporating this standard in all aspects of management and production to ensure excellence in customer service and product reliability. Assessment of this Quality System is regularly performed by the British Standards Institution.

The strive for excellence has motivated Tamdid Pipes® to acquire the Environmental Management System (ISO 14001), Water Regulations Advisory Scheme -WRAS (BS 6920), National Sanitation Foundation –NSF (Standard 61) and Saudi Arabian Standards Organization (SASO) Quality Mark.

Our strength lies in working with the contractor in the initial phases of a project to ensure the selection of the most suitable Fiberglass Pipe system that is both according to specification and commercially viable. It is the combination of experience, high technology, and dedication to service that gives Tamdid Pipes® the capability to meet the present and future needs of the Pipe Industry.



Tamdid Pipes® has ventured into Saudi Arabia to endow with the local market with specialized supply of GRP/GRV, GRE pipes & fittings, along with their relevant support services, maintenance and Operations. It offers services which compliments growing range of integrated services that enable us to take any industrial or public works project from concept through planning, financing, design, construction, operations and maintenance.

Every element of the firm is structured to ensure that we can leverage our global resources and knowhow to satisfy each client's particular needs and pleased to present an outline of its manufacturing capabilities and experience.

The services provided by Tamdid Pipes® are enhanced through working relationships and association with established International and local contractors, and specialized vendors. Using these strategic alliances Tamdid Pipes® can provide a combined team of well qualified personnel to implement the successful execution of projects to having the opportunity of putting our management, Engineering, Construction, & Maintenance skills to work for you. Tamdid Pipes® provides to their clients the very best in a wide variety of innovative products & services to an impressive sales offices base in whole of the Saudi Arabia, Lebanon and Egypt. Tamdid Pipes® in close co-operation with its clients and vendors can provide total turnkey services from concept to completion along with project and project management.

Services offered are concept development, preliminary design, pipe process, site selection, advance order of materials, program preparation, detailed design and stress analysis, price negotiation, quality control, coordination programming and cost control, isometric and Shop drawings, shipping & site supervision.

Tamdid Pipes® has gained in a short time synonymy with quality and client satisfaction, having been involved with many significant pipe supply and projects management throughout the Kingdom. A combination of flexibility, quality, special skills and adherence to budget have ensured a pre-eminent position when clients require a single source manufacture with capabilities in project development, management, construction services, supervision on installation and lines commissioning.

Our way to success is based on the trust understanding and absolute cooperation believing in the perfect simplicity and this all the more reason what Tamdid Pipes® has been able to understand the pressure and trails and will continue to be strong with the changing ebbs of the International business directions. We are carving to be recognized as the most excellent in the work. Our corporation is not just your liberation assistant but we are your co-worker. We are liable to the society that shall be good corporate citizens and high ethical standard in our organization.



Vision

Leading the pipe industry by discovering the new, reinventing the old, while preserving the culture of pipe technology and its tradition, guarrantying our clients around the world the ultimate experience by upholding our commitments and maintain the highest standards in design, manufacturing, quality, service and trust worthy business practices.

Mission

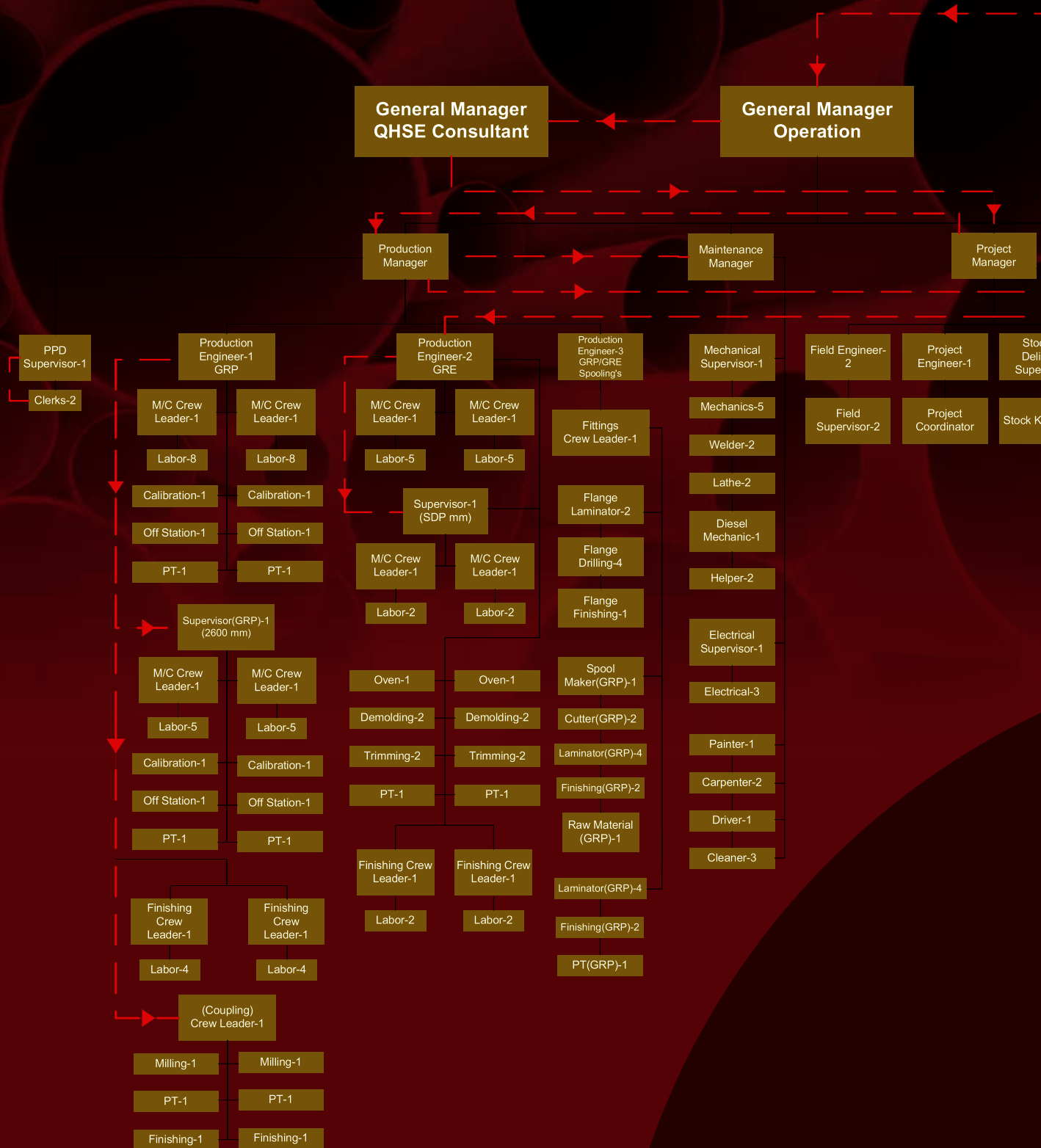
- 1) Offer the highest quality products though monitoring every stage of the process lleading to complete customer satisfaction.
- 2) Commitment to uphold the strictest quality assurance standards on all products in all aspects of production.
- 3) Optimize the researched techniques to continually improve the efficiency of the facility and the productivity of the staff.
- 4) Involve in the advancement of the community by offering quality scale salary, developing social circle and environmental programs.
- 5) Maintain reasonable profitability to support the mission and to expand the experience to customers around the globe.



Tamdid Pipes - Organization Chart

Tamdid has at its core, a team of competent, dedicated and motivated managers and engineers who straddle most pipe manufacturing sectors providing a multidiscipline management capability to the projects, design & execution. It is the policy of Tamdid to emphasize on constant training of its personnel through appraisal, coaching and training at all levels. Our future lies with the development of our people, particularly our younger employees. Our graduates rotate through within the company at various positions as to make their role and position more pivotal exposing them to as many areas of operation as possible within the first 3 years into the company. All graduate engineers are assigned to a mentor, who guides them through their first years in the company and helps them with professional development. Our office, its subsidiary offices and its appointed international recruitment agencies can mobilize very rapidly large numbers of highly skilled tradesmen and engineers as required.

With a policy of investing in its people, Tamdid supports managers and workforce alike through constant appraisal, coaching, training and by encouraging personal initiative. We are focused to consistently improve the high quality and standards of personnel for which Tamdid is recognized. It is the underlying policy of Tamdid to develop and train the indigenous labor force and retain this staff within the subsidiary operation, providing Technology Transfer in the specialist areas of design, engineering and production. In this regard we believe that we have been very successful. Tamdid has the contentment to declare his qualified staff as follows:



Tamdid Staff

General Manager Operation	I	Engineers	6
General Manager / General Consultant	I	Supervisors	6
General Internal Auditor/ Financial controller	I	Inspectors	10
Operation Manager	I	Foreman	8
HR & Personal Manager	I	Carpenters	4
Marketing Manager	I	Laminators	12
Sales Manager	I	Flange drilling	2
Site & Construction Manager	I	Cutter men	4
Maintenance Manager	I	Spool & Fitting makers	20
Electrical head of Department	I	Electricians	4
Mechanical head of department		Technicians	4
Safety & Security Manager	I	Steel Fixers	6
Managing Director	I	Welders	3
Technical & Project Manager	I	Drivers	6
Technical Manager	I	Heavy Equipment Operators	4
Logistics Manager	I	Guardsmen	8
Purchase Manager	I	Tea boys	2
Finance Manager	I		

Details of Pipe Products

Tamdid Pipes® manufactures the following products:

1. Glass Reinforced Polyester / Glass Reinforced Vinylester Pipes (GRP/GRV)

Pressure Pipe: Dia. 80 - 4000mm per AWWA C950, ASTM D3517, ASTM D3754 & BS5480 in 6 or 12 meter standard lengths with an operating pressure up to 30 bars are available for underground & above ground applications.

Gravity Pipe: Dia. 80 - 4000mm per ASTM D3262 and BS 5480 in 6 or 12 meter standard lengths are available for gravity applications.

Note: Pipes are fitted with a double bell coupling joint system or a restrained lamination system. A complete range of GRP Fittings is available. Several pipe stiffness classes are also available.

2. Glass Reinforced Epoxy Pipes (GRE)

GRE pipes and fittings are manufactured according to AWWA C 950, AWWA M 45, and ASTM D 2996 in 6 or 12 meters with operating pressures up to 60 bars for aboveground and underground applications. Diameter range from ND 80 mm up to ND 1200 mm.

3. Fittings & Spooling:

Tamdid Pipes® has established a standardized line of GRP/GRV fittings. The most common fittings are (Elbows, Reducers, Tees, Wyes and Flanges) and can be supplied either as standard pieces or custom designed spools making it easier for the erection contractor to install.

Fittings are jointed to GRP/GRV pipes with standard double bell couplings and require thrust blocks for pressure systems.



The method of fabrication of all GRP fittings is essentially the same. Pipes, after plant hydro-testing, are cut to the required dimensions. Pipe sections are then joined together by lamination. The thickness and width of the lamination is designed to exceed pipe performance.

Details of Contracting Services

Tamdid Pipes® offers the following services:

Engineering Services

Tamdid Pipes® provides a complete multi-discipline Engineering Design and Consultancy Service operating with in-house staff. When required, it can utilize Engineering resources from external specialized companies to form a design team assembled with experienced personnel having proven capabilities. During detailed engineering, strict adherence to client and internationally applicable standards, codes and procedures are maintained and implemented.

Compliance to engineering works detailed by project 'Work Scope', together with reviews to determine value engineering, plant safety are deemed paramount in the execution of the project. Tamdid Pipes® recognizes that quality assurance must form an integral part of the design engineering process and that a commitment to quality is required from all employees. Tamdid Pipes® quality assurance procedures and manuals have been developed by conform to those requirements defined by ISO 9000. Tamdid Pipes® computer aided design facilities combined with inter office electronic communication links, standard production methods and project procedures provide a uniform and coordinate engineering work process environment for project execution.

Tamdid outlook is to give the best engineering services to the clients in every phase of the operation. Our management & technical staff are specially trained in their areas of specialization, with a clear cut directive to secure long term cost effective product and services with particular emphasis on Quality and Efficiency.

Tamdid business process management system ideal for large scale deployment. We value the trust of our clients in our products and services and we acknowledge their interest in the values and actions of the company. Our global client list grows every day in testimony to the quality and performance integrity of our products. Our product and service offering is complemented by dedicated customer care and service.



Details of Contracting Services

Tamdid Networks provides a comprehensive and flexible portfolio of industry leading technical support, professional services, and education programs to help customers and partners realize maximum value from their network and security investments. Support Services provides the backup support that large networks demand, and lets customers select from a variety of options to augment their technical expertise.

Professional Services provides customized consulting services to assist customers in planning and designing networks with maximum efficiency. Educational Services delivers expert education and technical certification programs to help customers build their network expertise through standard technical programs, Web-based courses, customized workshops, and hands on labs sessions.

Tamdid Trading fast time to market strategy is to gain early in depth know about upcoming customer service with high standard which gives us the ability and capability to serve such leading company as:

ARAMCO

SABIC

Government Ministries,

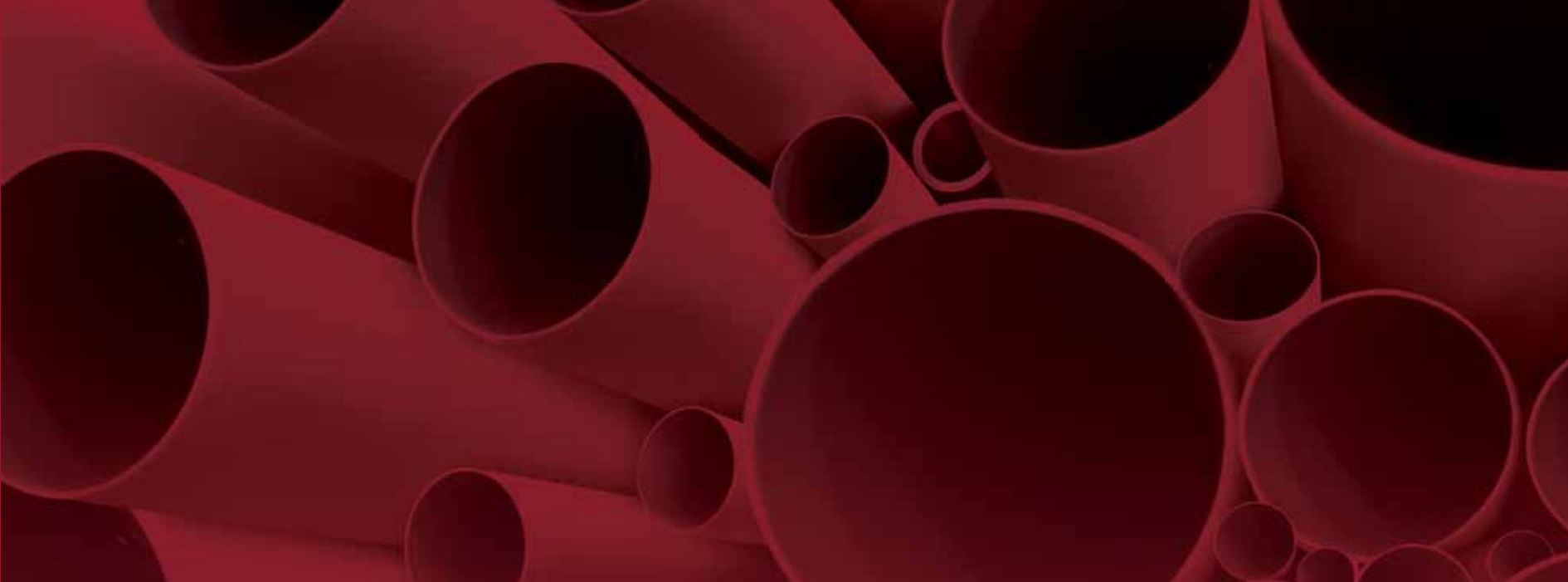
Industrial Companies

EPC contractors

Mini contractors

Our Engineering Department will provide assistance as follows:

- Preparation of computer generated (CAD) Isometric Drawings.
- Assessment of Isometric Drawings: Recommendations on suitable joints, connections and supports for above ground and below ground systems.
- Preparation of detailed spools drawings (CAD).
- Continued Technical Assistance from initial bidding phase to contract closure & system maintenance. Our company may offer to perform a stress, surge and flexibility analysis for the piping system.



Project Management:

Tamdid Pipes® can provide the overall Project Management function on small or large projects as the prime contractor. In this role, we manage all activities performed by Tamdid Pipes®, sub-contractors and other suppliers. Typically, our management functions include the following.

Establish project procedures and plans for internal work and coordination with External entities, including other contractors.

- Monitor and report progress measured against plans to the client. The progress reporting measurement is agreed with the client prior to implementation. Following this agreement, Tamdid Pipes® Management directs any actions needed to incorporate improvements obtain client approvals as delineated project procedures.
- Monitor works scope and advise client of any potential deviations as soon as they are identified in the trend program
- Co-ordinate work scope between the project office, sub-contractors, and suppliers to ensure tasks are correctly interfaced.
- Establish, monitor and report project schedule performance in meeting client milestones.
- Co-ordinate schedule progress between project office, sub-contractors and suppliers.
- Monitor and report project procurement activities.
- Establish total quality management processes and monitor implementation.
- Establish a team build program and monitor implementation. Typically, to establish consistency on a project, Tamdid Pipes® issues as parts of the Project Execution Procedures and Project Administrative procedures the defined managerial function to be implemented and followed. Overall description of Scope of Work by major activity and location.
- Execution plan for each major activity Schedules with key milestones.-Cost forecasting and control methods Organization charts, including names of personnel and manpower summarized by major activity and location.
- Security/Safety compliance plan.



Factory Pre-Fabrication

Factory pre-fabrication of Pipe and Fittings into spools to reduce field joints and overall installation costs. Instead of supplying the standard fittings and pipes and do the spools at the site, Tamdid Pipes® shall offer for the prefabricated spools so that the contractor can easily install the spools at the site, hence the cost and time can be reduced.

Training:

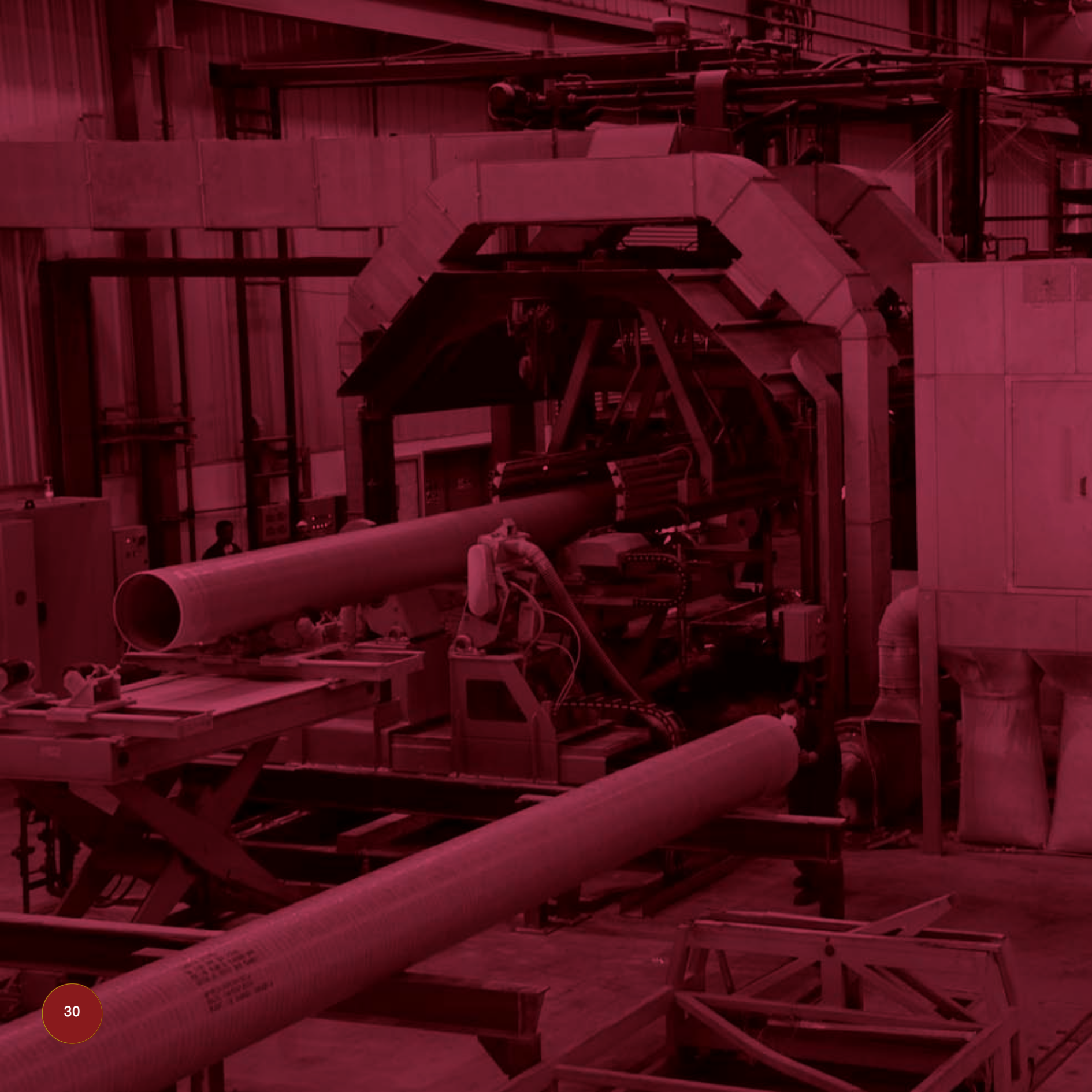
Training to the contractor employees shall be given by Tamdid Pipes® at free service. Tamdid Pipes® shall give the training about the pipe installation, application, repair works, loading, unloading, storage, handling, spools, standard pipes and fittings, raw materials, jointing systems etc.

Site Services

Our Site Service Department will provide assistance on pipe installation, such as site supervision or site inspection. The following reports shall be filled by our Site Service personnel. The reports include Quality assurance check list (Delivery and Installation), Pipe Deflection Report and the Hydro test Report. Our qualified Site Engineers and supervisors shall extend their experience and knowledge at the site only to ensure proper installation. He shall advice the contractor's employees about the installation process. The site service shall minimize the time of installation, waste of materials, poor workmanship, repair works etc. The Field Service engineer shall fill the site service report for each project.

The following check list and reports shall be filled by Tamdid Pipes® Filed service and site service engineers and the report shall be submitted to the client or the contractor and one copy shall be kept in our record.

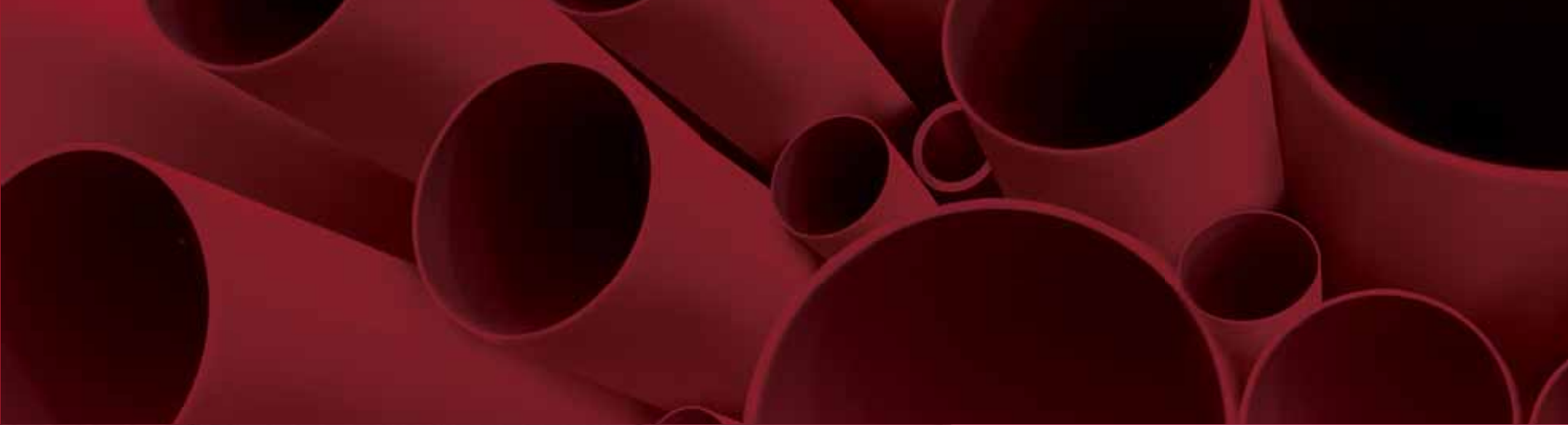
- Quality Assurance Check List for the Delivery and Installation
- Pipe Deflection Report
- Hydro Test Report



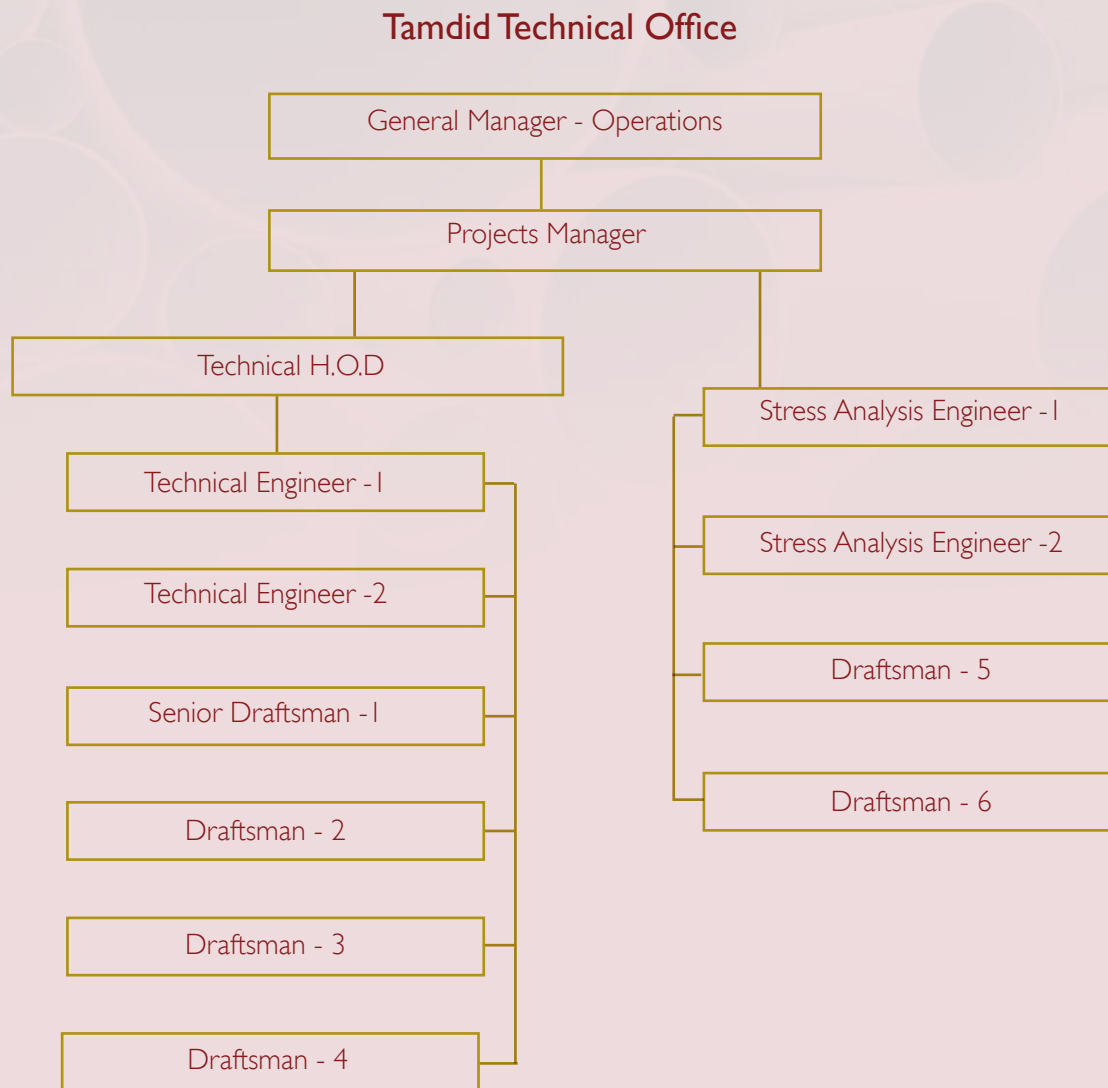
Engineering Organization Chart :

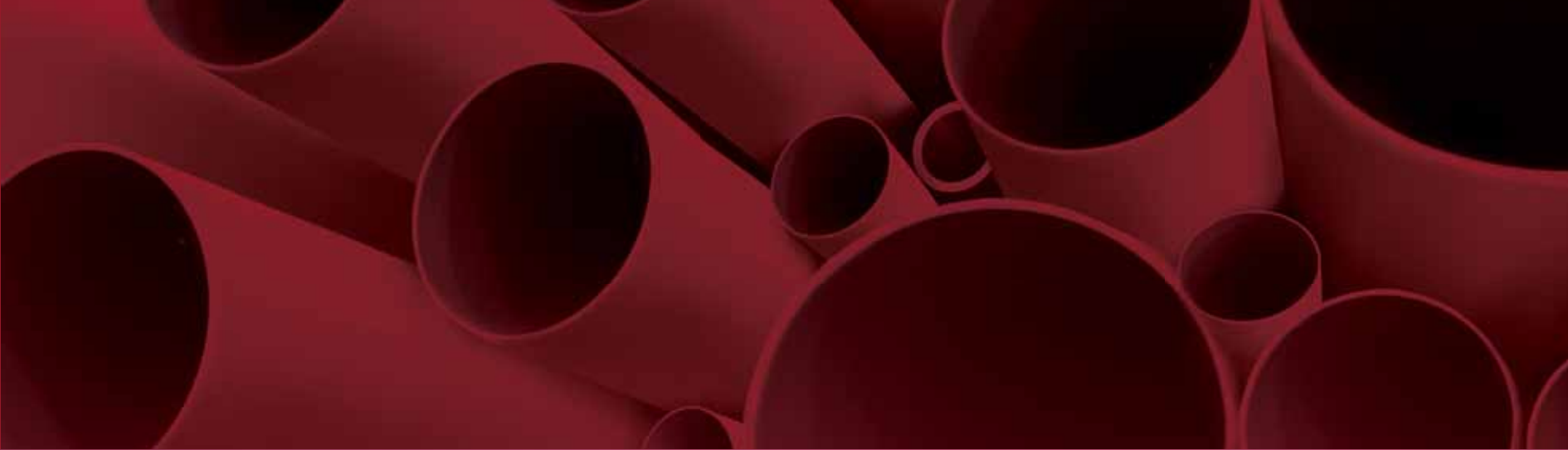
At Tamdid the technical office is structured as following:

- 1) The General Manager Operations has 16 years experience in Fiberglass pipe design, process and pipe system summary; he has the pre-experience in huge projects designed, produced and installed under his guidance and supervision.
- 2) The Engineering manager has 14 years experience in project Management, design, Isometrics, shop drawings and lamination process sheets.
- 3) Technical Engineer -I has 11 years of experience in GRP piping and field service.
- 4) A stress Analysis division has the Ability to perform pipe system stress analysis using Caesar II and component analysis using Finite Element Modelling programs.
- 5) Technical Engineer-2 has 5 years experience,
- 6) Technical Engineer-3 has 4 years experience,
- 7) 3 Draftsmen; are working at the technical department.



The Organization chart of the above employees matches with the below:





The Organization chart of the above employees matches with the below:

Sales department:

Our main strength is that our outdoor sales team they are ready to attend to your calls on very short notices. We are keen on the Newest Innovations and do our best to stay ahead of the crowd in order to provide truly cutting edge services guaranteed services level agreements we offer consultative and holistic Approach to companies our employee's are our greatest Assets and policy of company is to serve the best for our clients, flexibility and effectiveness has been developed and implemented the dignity and importance of the individual employee and his right to expect that he will be provided with safe place in which to work with fear of possible harm as the most excellent in the market we also offer a unique consulting service designed to guide our customer and offer them the most suitable solution for their Projects. Tamdid believes in the dignity and importance of the individual employee and his Right to expect that he will be provided with safe place in which to work with fear of possible harm to his life or health in secure working condition and efficient operation wills all applicable safety codes rules, regulation and standards to ensure a safe working in what capacity or position he may function.

Company strategy is therefore to achieve continual improvement in the sales quality and service offered to the customer this is achieved through a continual cycle of planning measurement analysis and improvement and Integration of our facilities in a controlled condition. Advice and recommendations that strictly focus on the client's requirement (no Sales pitches or hidden agendas as the only product we sell are advice).

This policy statement underlines the commitment of Tamdid Employee's and Contractors and work force towards achieving quality sales in all area resulting in total and consistent clients satisfaction and leadership in all area of GRP/GRE business.



EPC contracting: (Engineering, Procurement, Construction),

Tamdid pipes recognizes that EPC projects must be executed in strict manner in accordance with the requirements and specifications defined within the clients detailed project scope of work and typically with the principles and concept of all ISO standards such as 9001 (the quality Management System) and 14001 (Environmental management System) and with GRP/GRE norm. The success of Tamdidpipes has generally been achieved through adherence to a fundamental objective, that is, to provide our clients with a comprehensive range of multi-discipline Engineering, Procurement and Construction service to the highest quality within schedule and budget. The project team being a dedicated task force assembled utilizing experienced personnel with proven capabilities from Tamdidpipes and any appointed subcontractors and vendors.

Through all phases of project execution, Tamdidpipes place strong emphasis on its project management skills and in maintaining a close working relationship with our clients. We strongly believe that the project personnel must be properly motivated to execute the work. The initial activities will usually begin with a team building process to provide team understanding of the project requirements and to align both Tamdidpipes and client personnel with project objectives. Team members would jointly plan project methodologies, work process interfaces, and technical strategy to ensure consistency in strict adherence to client requirements.

Tamdidpipes has a number of computer aided tools which significantly enhance the total quality of the project works. In particular, Tamdid data communications network is of considerable value, enabling transfer of documentation between all sales office locations, providing a global project document management system.

Tamdidpipes committed to continuously improving the quality of work through customer interaction, leadership, and team work and work process improvement. We have instituted a number of initiatives in waste elimination, value engineering, and continuous improvement which form the basis of our total quality management program. Tamdidpipes emphasizes on high standards in the area of safety, both in design and construction. Throughout Tamdidpipes shares a common belief that safety is a primary concern. By coupling client and international standards with commitment to incorporate safety into the design and working environment, we can collectively construct and implement all works conforming to safe practices.



Machine Design & Construction:

Since its foundation, Tamdid has undertaken the design and the manufacture of GRP/GRE machineries along with all downstream attachments throughout KSA and export to many countries. To date, Tamdid has steadily continued to expand its business and has been favored by many customers with their support and patronage. Our mission is to create a set of values by providing customers with machines at an affordable price beyond their expectations. The primary tasks of Tamdid workshop:

- Production line extension and model range renewal to create technologic complex: "We sell our work and experience in GRP/GRE and not just machines",
- Sales and service network extension,
- Increasing market presence in developing countries,
- Investment in new technologies, increasing production capacity and flexibility to satisfy consumer and market demand,
- Increasing operating efficiency by means of labor productivity growth, decrease in resource consumption, purchasing system centralization and minimizing costs and
- Trademarks support by means of marketing.

Upholding the catchphrase "High efficiency and quality machines," Tamdid has been delivering machinery and equipment that have maximum efficiency while accommodating minimum budget, especially Contentious Winding Machines , Dis- continues lines, hydro tests , de-molding machines , pipe calibration and chamfering machine, Coupling grooving machines, pipe trimming and cutting machines with all accessories and site tools.

Especially in the area of works turnouts, Tamdid has rich experience in buying and selling new turnouts, as well as in manufacturing special turnouts. These activities have been evaluated favorably by the customers as meeting their requirements. Tamdid will continue to meet customer needs.



The production portfolio includes:

- Machines to produce Glass Reinforced pipes ranged from 300-2600, continuous lines
- Machine you produce Glass Reinforce pipes ranged from 400-2600, continuous lines
- Small diameter Machines to produce pipe ranged from 25mm to 500mm, discontinuous lines,
- Machines to produce Glass Reinforced Epoxy ranged from 25mm to 1600mm, discontinuous lines,
- Hydro testers for a range 25 to 300mm,
- Hydro testers for a range 300 to 1200mm,
- Hydro testers for a range 300 to 2000mm
- Hydro testers for a range 300 to 2600mm,
- Hydro testers for a range 300 to 4000mm,
- Pipe Trimming Machines, all sizes,
- Pipe chamfering machines,
- Pipe cutting machines,
- Pipe calibration machines,
- Coupling Grooving and cutting machines,
- All types of curing ovens and
- Special machineries, all kinds of cranes , Overhead cranes and steel constructions.

Diversified production portfolio of the Concern guarantees broad customer base which is being promoted three sales offices to serve more than 21 countries worldwide through extensive sales dealer network of about 4 countries.

Concern's range of manufacturing includes a wide spectrum of basic models which can be modified in accordance with customer's individual requirements.

The vertically integrated model of production allows Tamdid to provide full product life cycle, from research and development, right methodology of installation, metals and spare parts production to marketing sales operations and after sales technical service. In addition, Tamdid consolidated service center, will provide any required support and manage delivery schedule by highly qualified specialists with great experience and qualifications.



Tamdid Today:

Today Tamdid is a business without any border. The company such to be maximum effective and the fashion of business management play a key role in KSA and GCC. We clearly realize that the progress of the group is only possible over a harmonic combination of such components as concentration of business on clients needs, team result oriented professional, competent novel management and distributed powerful infrastructure that it's our approach and we exert every effort to advance ourselves dynamically to the future. The core of the group is united goal seeking professionals who know their own worth.

We need to strengthen our resolve and aim for higher achievements. Set out corporate vision goals and objectives and in order to build and achieve them in optimum time will require that each and every individual associated with the company to possess work quality of the highest possible standard it is our aim to be experienced in our field of expertise showed flexibility innovation and possessing a positive approach to all our undertakings.

Although we have achieved significant improvements, our target remains a zero fatality rate across our organization and we will continue to focus our efforts on achieving this goal. I trust that we will have a long and fruitful association in our quest to make a good Group even better.

